

DATE: 2022-02-24, 1:50 FILE: C:\Users\Jody\Documents\Working\Fernie Path\IC Drawings\03 Sheets\000 - COVER SHEET.dwg McElhanney Cover D - 2019-04-01

CLIENT

CITY OF FERNIE

ADDRESS / CONTACT INFO.

501 - 3RD AVE, BOX 190, FERNIE, BC V0B 1M0

PROJECT NAME

FERNIE VALLEY PATHWAY  
SEGMENT 1B

McELHANNEY PROJECT

2441 - 01170- 00

STATUS

PRELIMINARY CONSULTATION COMPLETE - ISSUED FOR FINAL CONSULTATION



**McElhanney**


PO Box 1505  
Unit C - 402 Highway 3  
Ferne BC  
Canada V0B 1M0  
T 250 425 0158





**A LOCATION PLAN**  
SCALE 1:15,000

DRAWING INDEX	
Sheet Number	Sheet Title
C-000	COVER SHEET
C-001	LOCATION PLAN & DRAWING INDEX
C-002	GENERAL NOTES & LEGEND
C-201	PROPOSED SITE PLAN
C-300	C-300 - STA. 6+00 TO STA. 7+80
C-301	STA. 7+50 TO STA. 9+50
C-302	STA. 9+50 TO STA. 11+50
C-303	STA. 11+50 TO STA. 13+50
C-304	STA. 13+50 TO STA. 15+50
C-305	STA. 15+50 TO STA. 17+50
C-306	STA. 17+50 TO STA. 19+50
C-307	STA. 19+50 TO STA. 21+50
C-308	STA. 21+50 TO STA. 23+06.40
C-401	TYPICAL SECTIONS



										<p>THIS DRAWING AND DESIGN IS THE PROPERTY OF McELHANNEY AND SHALL NOT BE USED, REUSED OR REPRODUCED WITHOUT THE CONSENT OF McELHANNEY. McELHANNEY WILL NOT BE HELD RESPONSIBLE FOR THE EMPLOYER OR UNAUTHORIZED USE OF THIS DRAWING AND DESIGN.</p> <p>THIS DRAWING AND DESIGN HAS BEEN PREPARED FOR THE CLIENT IDENTIFIED, TO MEET THE STANDARDS AND REQUIREMENTS OF THE APPLICABLE PUBLIC AGENCIES AT THE TIME OF PREPARATION. McELHANNEY, ITS EMPLOYEES, SUBCONSULTANTS AND AGENTS WILL NOT BE LIABLE FOR ANY LOSSES OR OTHER CONSEQUENCES RESULTING FROM THE USE OR RELIANCE UPON, OR ANY CHANGES MADE TO, THIS DRAWING, BY ANY THIRD PARTY, INCLUDING CONTRACTORS, SUPPLIERS, CONSULTANTS AND STAKEHOLDERS, OR THEIR EMPLOYEES OR AGENTS, WITHOUT McELHANNEY'S PRIOR WRITTEN CONSENT.</p> <p>INFORMATION ON EXISTING UNDERGROUND FACILITIES MAY NOT BE COMPLETE OR ACCURATE. McELHANNEY, ITS EMPLOYEES AND DIRECTORS ARE NOT RESPONSIBLE NOR LIABLE FOR THE LOCATION OF ANY UNDERGROUND CONDUITS, PIPES, CABLES OR OTHER FACILITIES WHETHER SHOWN OR OMITTED FROM THIS PLAN, PRIOR TO CONSTRUCTION. CONTRACTOR SHALL EXPOSE LOCATIONS OF ALL EXISTING FACILITIES BY HAND DIGGING OR HYDROVAC AND ADVISE THE ENGINEER OF POTENTIAL CONFLICTS.</p>										<div><div><div><div>McElhanney</div><div>PO Box 1505 Unit C - 402 Highway 3 Fernie BC Canada V0B 1M0 T 250 425 0158</div></div></div><div><div>PRELIMINARY NOT FOR CONSTRUCTION</div><div>THIS DRAWING HAS NOT BEEN APPROVED AND MAY CONTAIN ERRORS AND OMISSIONS</div></div></div>										<div><div><div>CITY OF FERNIE</div><div>CITY HALL 501-3RD AVENUE, BOX 190, FERNIE B.C. V0B 1M0</div><div>FERNIE VALLEY PATHWAY SEGMENT 1B</div><div>SITE LOCATION PLAN &amp; DRAWING INDEX</div></div><div><div>Drawing No.</div><div>C-001</div></div><div><div>Project Number</div><div>2441-01170-00</div></div><div><div>Rev.</div><div>A</div></div></div>																													
A										2022/02/24										PRELIMINARY CONSULTATION COMPLETE - ISSUED FOR FINAL CONSULTATION										AD										TW										KM									
Rev										Date										Description										Drawn										Design										App'd									



1. THE LOCATION AND SIZE OF EXISTING UTILITIES AND SERVICES, AS SHOWN ON THE DRAWINGS IS APPROXIMATE ONLY. PRIOR TO COMMENCEMENT OF CONSTRUCTION THE CONTRACTOR SHALL EXPOSE AND VERIFY THE EXACT LOCATION AND SIZE OF THESE INSTALLATIONS AND SHALL NOTIFY THE CONSULTANT OF ANY DISCREPANCIES, CONFLICTS OR OMISSIONS.
2. THE CONTRACTOR SHALL EXERCISE EXTREME CAUTION WHEN WORKING NEAR EXISTING UTILITIES AND SERVICES. ANY DAMAGES SUFFERED BY THESE UTILITIES, WHICH MAY BE ATTRIBUTED TO THE CONTRACTOR'S OPERATIONS, SHALL BE REPAIRED BY THE CONTRACTOR AT HIS EXPENSE AND TO THE SATISFACTION OF THE AUTHORITY HAVING JURISDICTION.
3. WHEN WORKING ON EXISTING PAVEMENT WHICH WILL BE RETAINED FOR FUTURE USE, THE CONTRACTOR SHALL EXERCISE CARE NOT TO CAUSE ANY DAMAGE. ANY DAMAGE CAUSED BY THE CONTRACTOR TO EQUIVALENT CONDITION TO THAT EXISTING PREVIOUS AT HIS EXPENSE AND TO THE SATISFACTION OF THE CONSULTANT.
4. THE CONTRACTOR SHALL USE ONLY NEW AND APPROVED MATERIALS AND SHALL NOT SUBSTITUTE ANY MATERIALS WITHOUT THE PRIOR WRITTEN APPROVAL OF THE CONSULTANT.
5. ALL SURVEY MONUMENTS, PROPERTY PINS AND PROJECT PRIMARY SURVEY CONTROL PINS, SHALL BE PROTECTED DURING ALL STAGES OF CONSTRUCTION. ANY DAMAGE SUFFERED BY THE MONUMENTS OR PINS SHALL BE REPAIRED BY THE CONTRACTOR AT HIS EXPENSE.
6. EXISTING PARKING AREAS, ON-SITE AND OFF-SITE ROADS MUST BE KEPT CLEAN. STREET, ROAD AND PARKING AREA CLEANING SHALL BE DONE BY THE CONTRACTOR AT HIS EXPENSE.
7. DISTURBANCE TO EXISTING LANDSCAPING OR SURFACE IMPROVEMENT, ATTRIBUTABLE TO THE CONTRACTOR'S OPERATION SHALL BE CORRECTED BY THE CONTRACTOR AT HIS EXPENSE. SUCH REPAIR SHALL BE CARRIED OUT TO THE SATISFACTION OF THE CONSULTANT AND THE CITY OF FERNIE.
8. THE CONTRACTOR SHALL NOT ENTER UPON ADJACENT PROPERTIES DURING THE COURSE OF CONSTRUCTION WITHOUT THE PRIOR APPROVAL OF THE PROPERTY OWNER. IF THE CONTRACTOR DOES CAUSE DAMAGE TO ADJOINING PROPERTY HE SHALL IMMEDIATELY REPAIR IT TO THE SATISFACTION OF THE OWNER. HE SHALL OBTAIN A LETTER OF CLEARANCE FROM THE OWNER AND SUBMIT IT TO THE CONSULTANT. SUBSTANTIAL COMPLETION SHALL NOT BE GRANTED UNTIL ALL SUCH LETTERS HAVE BEEN RECEIVED BY THE CONSULTANT.
9. CONSTRUCTION AND EXCAVATION WASTES, OVERBURDEN, SOIL, OR OTHER SUBSTANCES DELETERIOUS TO AQUATIC LIFE SHALL BE DISPOSED OF OR PLACED IN SUCH A MANNER SO AS TO PREVENT THEIR ENTRY INTO ANY WATERCOURSE, RAVINE OR STORM SEWER SYSTEM.
10. ALL WORK SHALL BE UNDERTAKEN IN A MANNER THAT PREVENTS THE RELEASE OF SEDIMENT-LADEN WATER INTO ANY DITCH, WATERCOURSE OR STORM SEWER.

1. GEODETIC INFORMATION IS IN UTM ZONE 11 CVD2013.
2. CONSTRUCTION LAYOUT SURVEY IS THE RESPONSIBILITY OF THE CONTRACTOR AND SHALL BE CONSIDERED INCIDENTAL TO THE WORK.
3. SURVEY CONTROL BENCHMARKS WILL BE PROVIDED BY THE CONSULTANT FOR THE CONTRACTOR'S USE.
4. SURVEY COMPLETED ON OCTOBER 13, 2021

	PROPOSED	EXISTING
PATHWAY ALIGNMENT	0+000 ———— 0+030	
EDGE OF PAVEMENT	—————	—————
EDGE OF GRAVEL		—————
DAYLIGHT	—————	
STORM MAIN & MANHOLE		— D ———— (H)
STORM CULVERT	—————	—————
WATER MAIN & VALVE		— W ———— (H)
HYDRANT		(H)
MANHOLE		(H)
SANITARY MAIN & MANHOLE		— S ———— (H)
POWERLINE - OVERHEAD		— E ————
POWERLINE - UNDERGROUND		—————
FIBRE OPTIC LINE		—————
STREET LIGHT		————— (L)
NATURAL GAS LINE		— G ————
TOP OF SLOPE		—————
TOE OF SLOPE		—————
DITCH DRAINAGE		—————
FENCE		—————

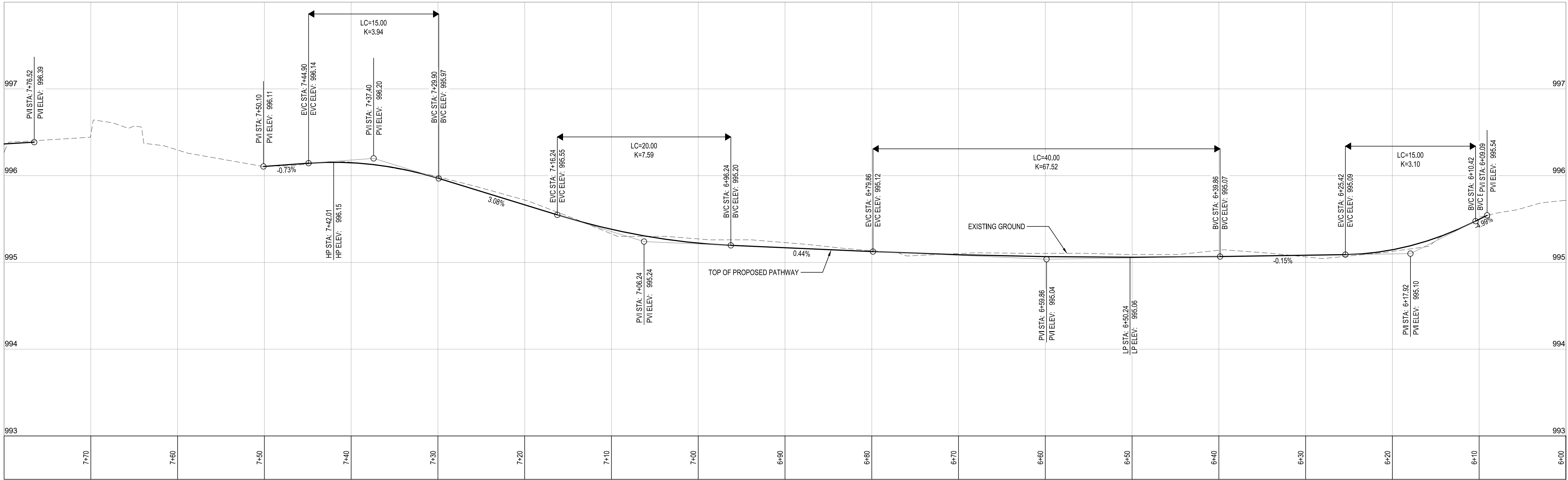
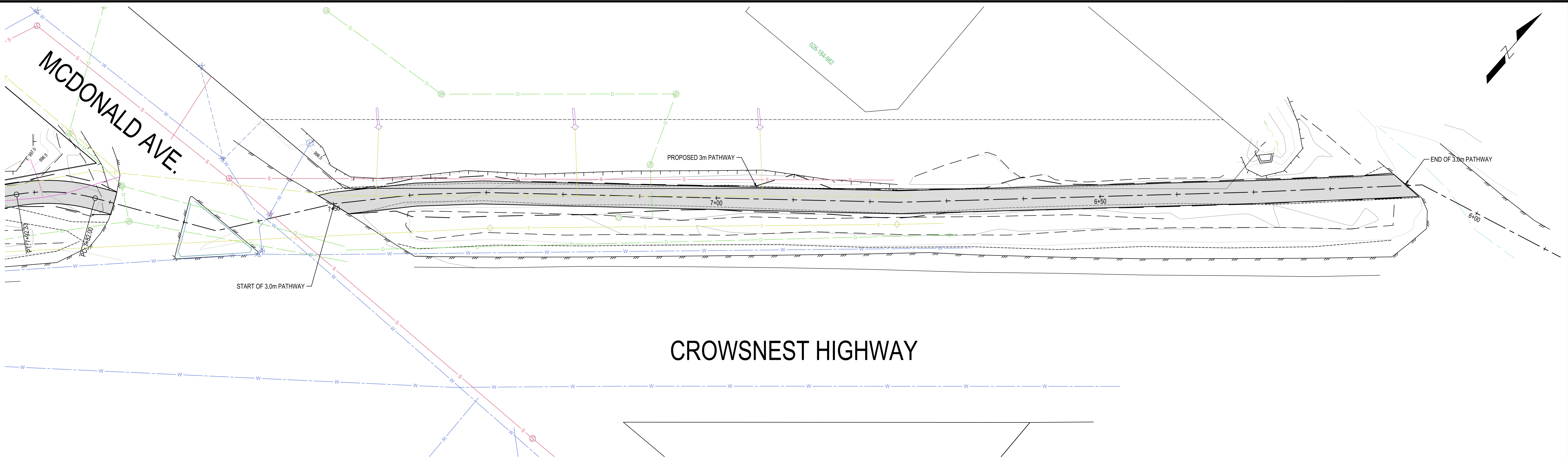
			<p>THIS DRAWING AND DESIGN IS THE PROPERTY OF McELHANNEY. McELHANNEY WILL NOT BE HELD RESPONSIBLE FOR THE ANY/OTHER OR UNAUTHORIZED USE OF THIS DRAWING AND DESIGN.</p> <p>THIS DRAWING AND DESIGN HAS BEEN PREPARED FOR THE CLIENT IDENTIFIED, TO MEET THE STANDARDS AND REQUIREMENTS OF THE APPLICABLE PUBLIC AGENCIES AT THE TIME OF PREPARATION. McELHANNEY, ITS EMPLOYEES, SUBCONSULTANTS AND AGENTS WILL NOT BE LIABLE FOR ANY LOSSES OR OTHER CONSEQUENCES RESULTING FROM THE USE OR RELIANCE UPON, OR ANY CHANGES MADE TO, THIS DRAWING, BY ANY THIRD PARTY, INCLUDING CONTRACTORS, SUPPLIERS, CONSULTANTS AND STAKEHOLDERS, OR THEIR EMPLOYEES OR AGENTS, WITHOUT McELHANNEY'S PRIOR WRITTEN CONSENT.</p> <p>INFORMATION ON EXISTING UNDERGROUND FACILITIES MAY NOT BE COMPLETE OR ACCURATE. McELHANNEY, ITS EMPLOYEES AND DIRECTORS ARE NOT RESPONSIBLE FOR THE LOCATION OF ANY UNDERGROUND FACILITIES, PIPES, CABLES OR OTHER FACILITIES WHETHER SHOWN OR OMITTED FROM THIS PLAN. PRIOR TO CONSTRUCTION CONTRACTOR SHALL EXPLORE LOCATIONS OF ALL EXISTING FACILITIES BY HAND DIGGING OR HYDROVAC AND ADVISE THE ENGINEER OF POTENTIAL CONFLICTS.</p>			 <p><b>McElhanney</b></p>			<p><b>PRELIMINARY NOT FOR CONSTRUCTION</b></p>			<p><b>CITY OF FERNIE</b> CITY HALL 501-3RD AVENUE, BOX 190, FERNIE B.C. V0B 1M0</p> <p><b>FERNIE VALLEY PATHWAY SEGMENT 1B</b></p> <p><b>GENERAL NOTES &amp; LEGEND</b></p>			<p>Drawing No.</p> <p><b>C-002</b></p>	
						<p>PO Box 1505 Unit C - 402 Highway 3 Ferne BC Canada V0B 1M0 T 250 425 0158</p>			<p>THIS DRAWING HAS NOT BEEN APPROVED AND MAY CONTAIN ERRORS AND OMISSIONS</p>			<p>Project Number</p> <p><b>2441-01170-00</b></p>		<p>Rev.</p> <p><b>A</b></p>		
<p><b>A</b> <b>2022/02/24</b> PRELIMINARY CONSULTATION COMPLETE - ISSUED FOR FINAL CONSULTATION</p>			<b>AD</b>	<b>TW</b>	<b>KM</b>											
<b>Rev</b>	<b>Date</b>	<b>Description</b>		<b>Drawn</b>	<b>Design</b>	<b>App'd</b>										







DATE: 2022/02/24, 1:52 PM FILE: C:\Users\jdoyle\Documents\Working\Fernie Valley Pathway\Drawings\03 Sheets\0300 - Plan and Profile.dwg  
McElhanney AND ID - 2022-12-08



Rev	Date	Description	Drawn	Design	App'd
A	2022/02/24	PRELIMINARY CONSULTATION COMPLETE - ISSUED FOR FINAL CONSULTATION	AD	TW	KM

THIS DRAWING AND DESIGN IS THE PROPERTY OF McELHANNEY AND SHALL NOT BE USED, REUSED OR REPRODUCED WITHOUT THE CONSENT OF McELHANNEY. McELHANNEY WILL NOT BE HELD RESPONSIBLE FOR THE IMPROPER OR UNAUTHORIZED USE OF THIS DRAWING AND DESIGN.

THIS DRAWING AND DESIGN HAS BEEN PREPARED FOR THE CLIENT IDENTIFIED. TO MEET THE STANDARDS AND REQUIREMENTS OF THE AFFIDAVIT PUBLIC SERVICES AT THE TIME OF PREPARATION, McELHANNEY, ITS EMPLOYEES, SUBCONSULTANTS AND AGENTS WILL NOT BE LIABLE FOR ANY LOSSES OR OTHER CONSEQUENCES RESULTING FROM THE USE OR RELIANCE UPON, OR ANY CHANGES MADE TO, THIS DRAWING, BY ANY THIRD PARTY, INCLUDING CONTRACTORS, SUPPLIERS, CONSULTANTS AND STAKEHOLDERS, OR THEIR EMPLOYEES OR AGENTS, WITHOUT McELHANNEY'S PRIOR WRITTEN CONSENT.

INFORMATION ON EXISTING UNDERGROUND FACILITIES MAY NOT BE COMPLETE OR ACCURATE. McELHANNEY, ITS EMPLOYEES AND DIRECTORS ARE NOT RESPONSIBLE NOR LIABLE FOR THE LOCATION OF ANY UNDERGROUND CONDUITS, PIPES, CABLES OR OTHER FACILITIES WHETHER SHOWN OR OMITTED FROM THIS PLAN. PRIOR TO CONSTRUCTION, CONTRACTOR SHALL EXPOSE LOCATIONS OF ALL EXISTING FACILITIES BY HAND DIGGING OR HYDROVAC AND ADVISE THE ENGINEER OF POTENTIAL CONFLICTS.

01:25010

ORIGINAL DWG SIZE: ANSI D (22" x 34")

McElhanney

PO Box 1505  
Unit C - 402 Highway 3  
Fernie BC  
Canada V0B 1M0  
T 250 425 0158

PRELIMINARY  
NOT FOR  
CONSTRUCTION

THIS DRAWING HAS NOT BEEN APPROVED  
AND MAY CONTAIN ERRORS AND OMISSIONS

CITY OF FERNIE  
CITY HALL 501-3RD AVENUE, BOX 190, FERNIE B.C. V0B 1M0

FERNIE VALLEY PATHWAY  
SEGMENT 1B  
PLAN & PROFILE - SHEET 1 OF 9  
STA. 6+00 TO STA. 7+80

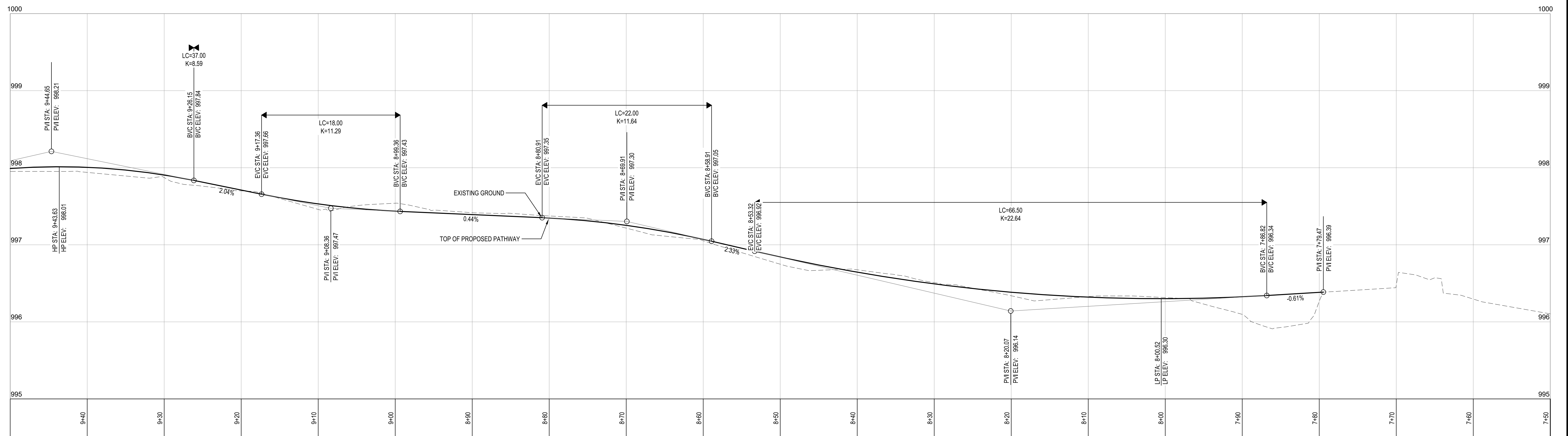
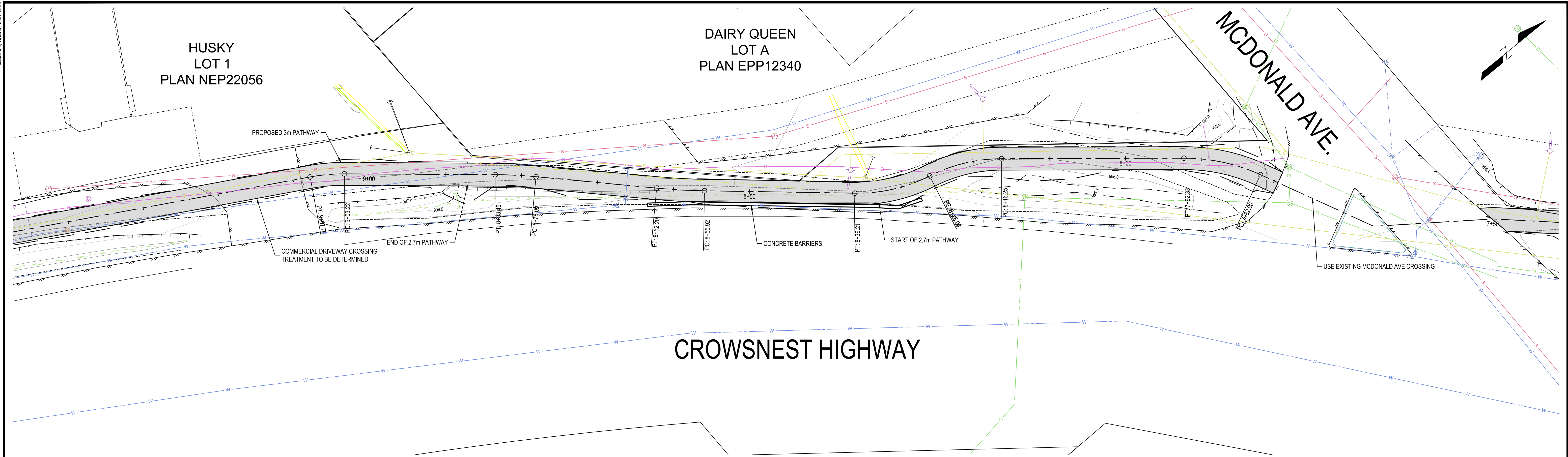
Drawing No.  
**C-300**

Project Number  
2441-01170-00

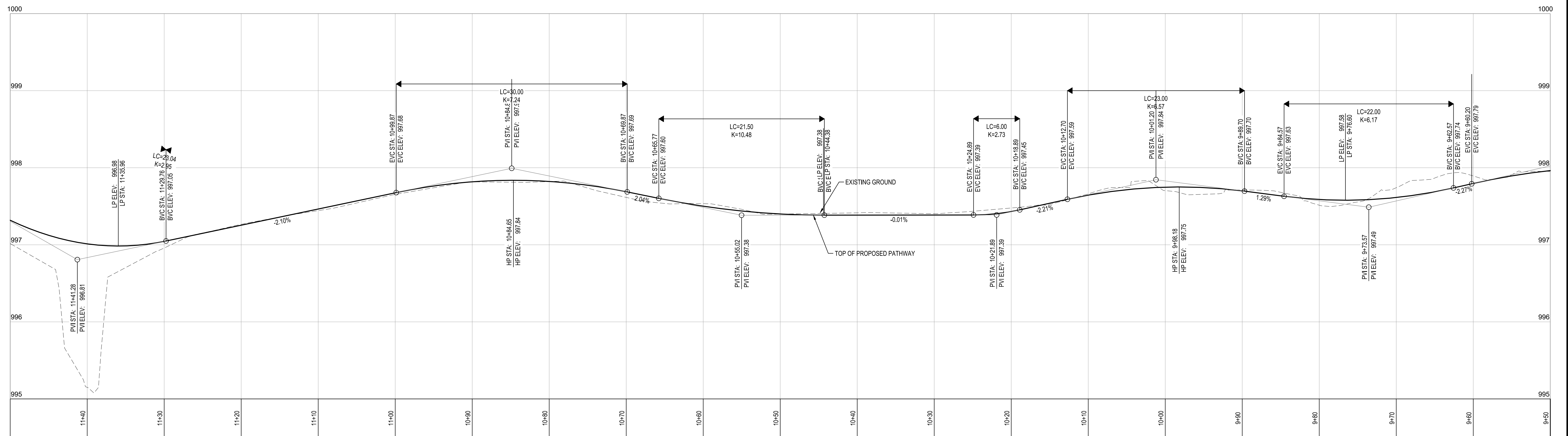
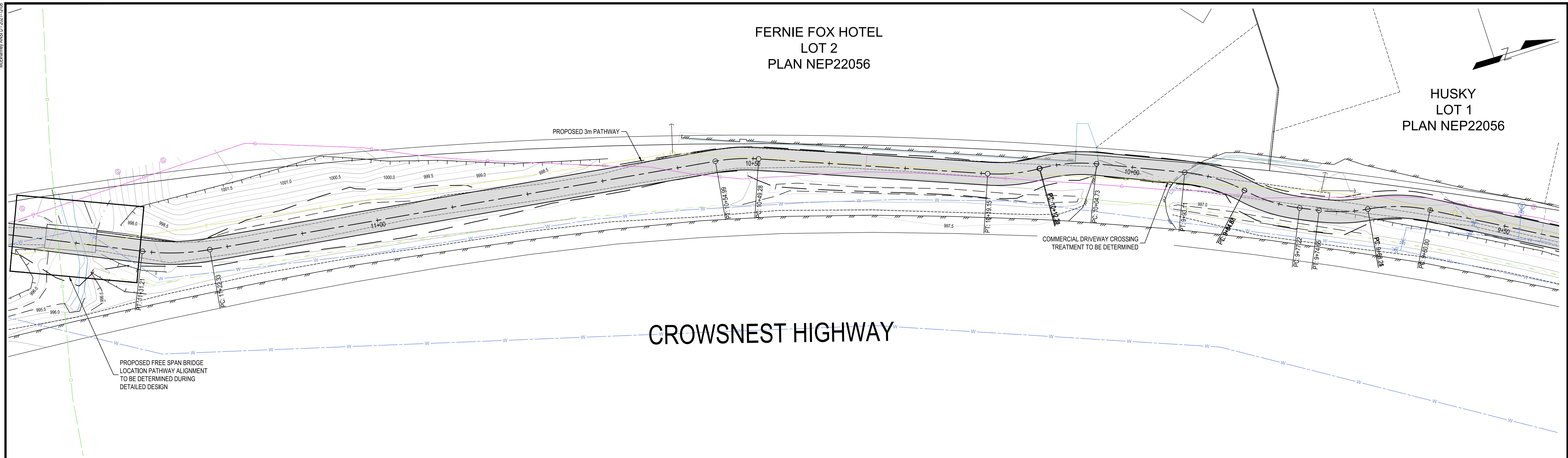
Rev.  
A

DESTROY ALL PRINTS BEARING PREVIOUS REVISION



[illegible]



[illegible]

ORIGINAL DWG SIZE: ANSI D (22" x 34")



PO Box 1505  
Unit C - 402 Highway 3  
Fernie BC  
Canada V0B 1M0  
T 250 425 0158

PRELIMINARY  
NOT FOR  
CONSTRUCTION

THIS DRAWING HAS NOT BEEN APPROVED  
AND MAY CONTAIN ERRORS AND OMISSIONS

**CITY OF FERNIE**  
CITY HALL 501-3RD AVENUE, BOX 190, FERNIE B.C. V0B 1M0

---

**FERNIE VALLEY PATHWAY  
SEGMENT 1B  
PLAN & PROFILE - SHEET 3 OF 9  
STA. 9+50 TO STA. 11+50**

Drawing No.

C-302

Project Number	Rev.
2441-01170-00	A





THIS DRAWING AND DESIGN IS THE PROPERTY OF MELHANNAY AND SHALL NOT BE USED, REUSED OR REPRODUCED WITHOUT THE CONSENT OF MELHANNAY. MELHANNAY WILL NOT BE HELD RESPONSIBLE FOR THE IMPROPER OR UNAUTHORIZED USE OF THIS DRAWING AND DESIGN.

THIS DRAWING AND DESIGN HAS BEEN PREPARED FOR THE CLIENT IDENTIFIED, TO MEET THE STANDARDS AND REQUIREMENTS OF THE ARCHITECTURAL FIRMS OR AGENCIES OF THE FIRM OF PREPARATION. MELHANNAY'S EMPLOYEES, SUBCONSULTANTS AND AGENTS WILL NOT BE LIABLE FOR ANY LOSSES OR OTHER CONSEQUENCES RESULTING FROM THE USE OF OR RELIANCE UPON, OR ANY CHANGES MADE TO, THIS DRAWING, IN ANY THIRD PARTY, INCLUDING CONTRACTORS, SUPPLIERS, CONSULTING ENGINEERS OR ARCHITECTS, OR THEIR EMPLOYEES OR AGENTS, WITHOUT MELHANNAY'S PRIOR WRITTEN CONSENT.

INFORMATION ON EXISTING UNDERGROUND FACILITIES MAY NOT BE COMPLETE OR ACCURATE. MELHANNAY, ITS EMPLOYEES AND DIRECTORS ARE NOT RESPONSIBLE NOR LIABLE FOR THE LOCATION OF ANY UNDERGROUND CONDUITS, PIPES, CABLES OR OTHER FACILITIES WHETHER SHOWN OR OMITTED FROM THIS PLAN. PRIOR TO CONSTRUCTION PROJECTS, CONSULT TOPIC LOCATIONS OF ALL EXISTING FACILITIES BY HAND DIGGING OR HYDROVAC, AND ADVISE THE ENGINEER OF POTENTIAL CONFLICTS.

ORIGINAL DWG SIZE: ANSI D (22" x 34")

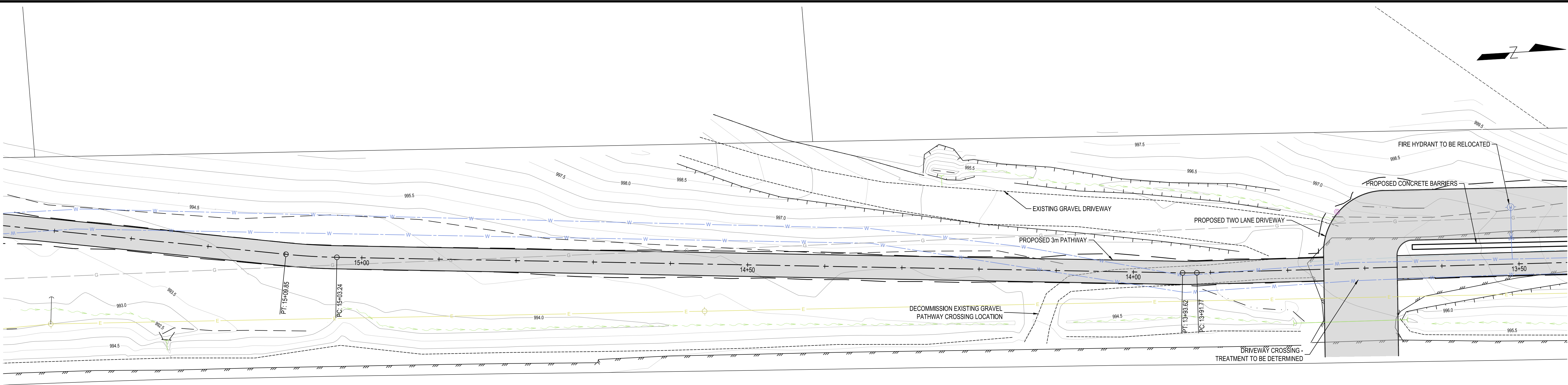


THIS DRAWING HAS NOT BEEN APPROVED  
AND MAY CONTAIN ERRORS AND OMISSIONS

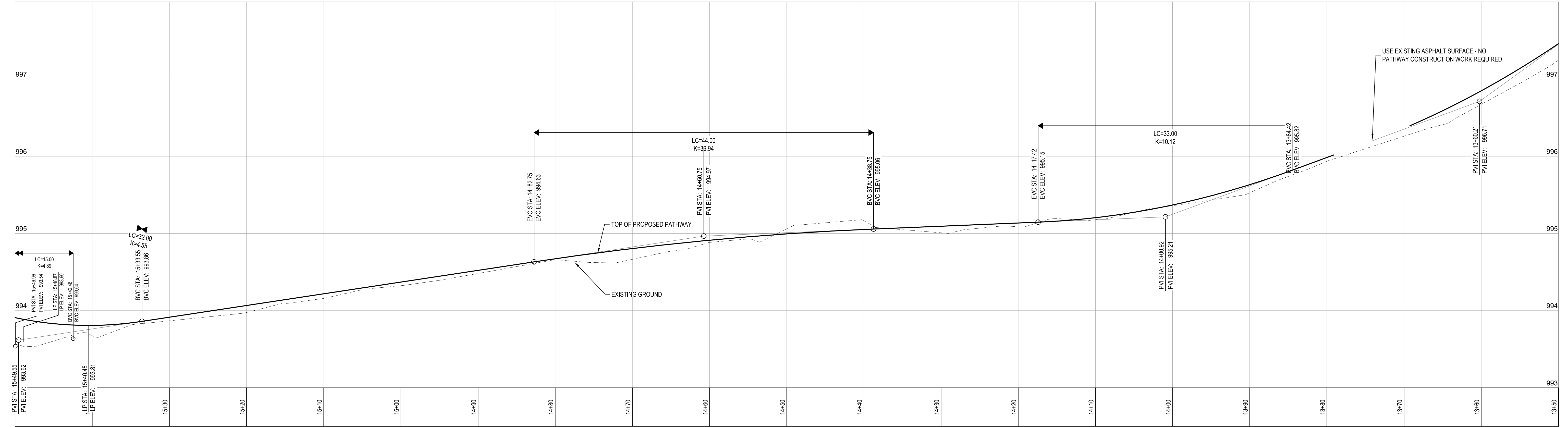
Drawing No.	
C-303	
Project Number	Rev.
2441-01170-00	A



DATE: 2022-02-24, 1:50, FILE: C:\Users\jdoyle\Documents\Working\Fern Valley\1C Drawings\1C Sheet\C-304 - Plan and Profile.dwg, McElhanney AND ID: 202-12-08



CROWSNEST HIGHWAY

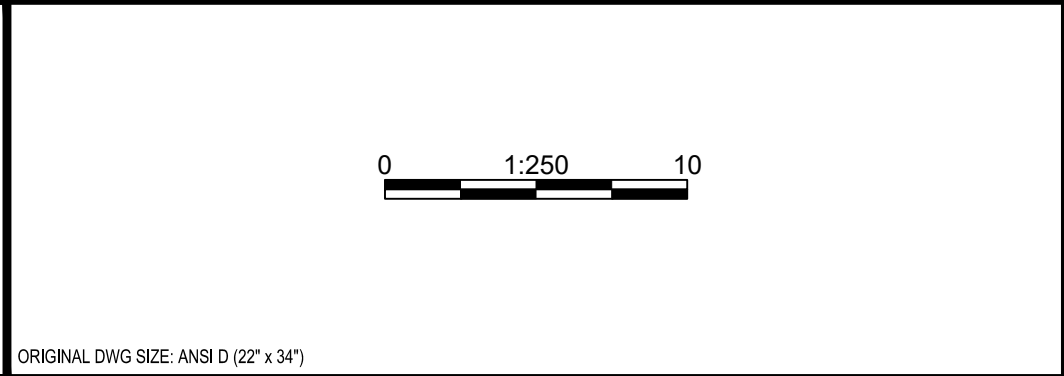


Rev	Date	Description	Drawn	Design	App'd
A	2022/02/24	PRELIMINARY CONSULTATION COMPLETE - ISSUED FOR FINAL CONSULTATION	AD	TW	KM

THIS DRAWING AND DESIGN IS THE PROPERTY OF McELHANNEY AND SHALL NOT BE USED, REUSED OR REPRODUCED WITHOUT THE CONSENT OF McELHANNEY. McELHANNEY WILL NOT BE HELD RESPONSIBLE FOR THE IMPROPER OR UNAUTHORIZED USE OF THIS DRAWING AND DESIGN.

THIS DRAWING AND DESIGN HAS BEEN PREPARED FOR THE CLIENT IDENTIFIED. TO MEET THE STANDARDS AND REQUIREMENTS OF THE APPLICABLE PUBLIC AGENCIES AT THE TIME OF PREPARATION. McELHANNEY, ITS EMPLOYEES, SUBCONSULTANTS AND AGENTS WILL NOT BE LIABLE FOR ANY LOSSES OR OTHER CONSEQUENCES RESULTING FROM THE USE OR RELIANCE UPON, OR ANY CHANGES MADE TO, THIS DRAWING, BY ANY THIRD PARTY, INCLUDING CONTRACTORS, SUPPLIERS, CONSULTANTS AND STAKEHOLDERS, OR THEIR EMPLOYEES OR AGENTS, WITHOUT McELHANNEY'S PRIOR WRITTEN CONSENT.

INFORMATION ON EXISTING UNDERGROUND FACILITIES MAY NOT BE COMPLETE OR ACCURATE. McELHANNEY, ITS EMPLOYEES AND DIRECTORS ARE NOT RESPONSIBLE NOR LIABLE FOR THE LOCATION OF ANY UNDERGROUND CONDUITS, PIPES, CABLES OR OTHER FACILITIES WHETHER SHOWN OR OMITTED FROM THIS PLAN. PRIOR TO CONSTRUCTION, CONTRACTOR SHALL EXPOSE LOCATIONS OF ALL EXISTING FACILITIES BY HAND DIGGING OR HYDROVAC AND ADVISE THE ENGINEER OF POTENTIAL CONFLICTS.



PO Box 1505  
Unit C - 402 Highway 3  
Fernie BC  
Canada V0B 1M0  
T 250 425 0158

PRELIMINARY  
NOT FOR  
CONSTRUCTION

THIS DRAWING HAS NOT BEEN APPROVED  
AND MAY CONTAIN ERRORS AND OMISSIONS

CITY OF FERNIE  
CITY HALL 501-3RD AVENUE, BOX 190, FERNIE B.C. V0B 1M0

FERNIE VALLEY PATHWAY  
SEGMENT 1B  
PLAN & PROFILE - SHEET 5 OF 9  
STA. 13+50 TO 15+50

Drawing No.	C-304
Project Number	2441-01170-00
Rev.	A

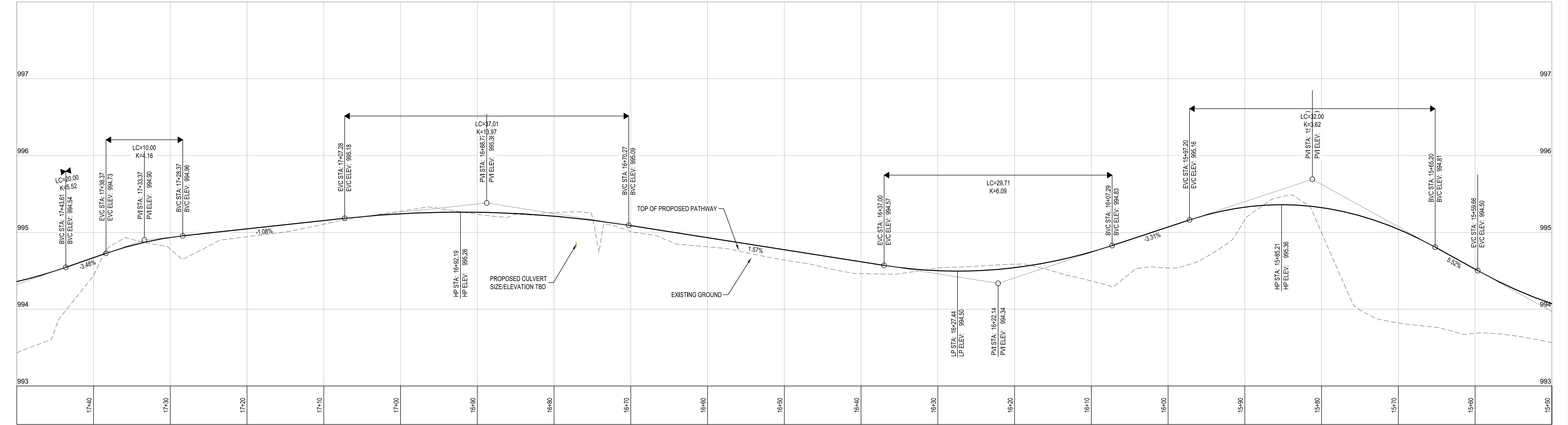
DESTROY ALL PRINTS BEARING PREVIOUS REVISION



DATE: 2022/02/24 1:50 FILE: C:\Users\jdoyle\Documents\Working\Fernie\Plan\Profile\Drawings\03\_Sheet\0305\_Plan and Profile.dwg  
McElhanney ANS D - 202-12-03



CROWSNEST HIGHWAY



Rev	Date	Description	Drawn	Design	App'd
A	2022/02/24	PRELIMINARY CONSULTATION COMPLETE - ISSUED FOR FINAL CONSULTATION	AD	TW	KM

THIS DRAWING AND DESIGN IS THE PROPERTY OF McELHANNEY AND SHALL NOT BE USED, REUSED OR REPRODUCED WITHOUT THE CONSENT OF McELHANNEY. McELHANNEY WILL NOT BE HELD RESPONSIBLE FOR THE IMPROPER OR UNAUTHORIZED USE OF THIS DRAWING AND DESIGN.

THIS DRAWING AND DESIGN HAS BEEN PREPARED FOR THE CLIENT IDENTIFIED, TO MEET THE STANDARDS AND REQUIREMENTS OF THE APPLICABLE PUBLIC AGENCIES AT THE TIME OF PREPARATION. McELHANNEY, ITS EMPLOYEES, SUBCONSULTANTS AND AGENTS WILL NOT BE LIABLE FOR ANY LOSSES OR OTHER CONSEQUENCES RESULTING FROM THE USE OR RELIANCE UPON, OR ANY CHANGES MADE TO, THIS DRAWING, BY ANY THIRD PARTY, INCLUDING CONTRACTORS, SUPPLIERS, CONSULTANTS AND STAKEHOLDERS, OR THEIR EMPLOYEES OR AGENTS, WITHOUT McELHANNEY'S PRIOR WRITTEN CONSENT.

INFORMATION ON EXISTING UNDERGROUND FACILITIES MAY NOT BE COMPLETE OR ACCURATE. McELHANNEY, ITS EMPLOYEES AND DIRECTORS ARE NOT RESPONSIBLE NOR LIABLE FOR THE LOCATION OF ANY UNDERGROUND CONDUITS, PIPES, CABLES OR OTHER FACILITIES WHETHER SHOWN OR OMITTED FROM THIS PLAN, PRIOR TO CONSTRUCTION. CONTRACTOR SHALL EXPOSE LOCATIONS OF ALL EXISTING FACILITIES BY HAND DIGGING OR HYDROVAC AND ADVISE THE ENGINEER OF POTENTIAL CONFLICTS.

ORIGINAL DWG SIZE: ANSI D (22" x 34")

0 1:250 10

PO Box 1505  
Unit C - 402 Highway 3  
Fernie BC  
Canada V0B 1M0  
T 250 425 0158

PRELIMINARY  
NOT FOR  
CONSTRUCTION

THIS DRAWING HAS NOT BEEN APPROVED  
AND MAY CONTAIN ERRORS AND OMISSIONS

CITY OF FERNIE  
CITY HALL 501-3RD AVENUE, BOX 190, FERNIE B.C. V0B 1M0

FERNIE VALLEY PATHWAY  
SEGMENT 1B  
PLAN & PROFILE - SHEET 6 OF 9  
STA. 15+50 TO STA. 17+50

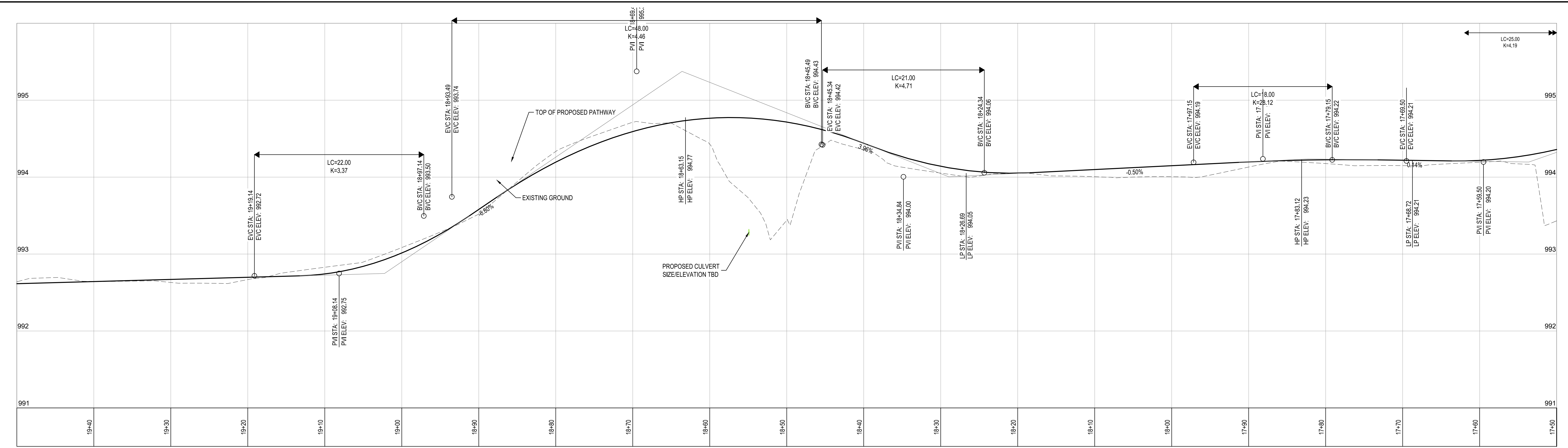
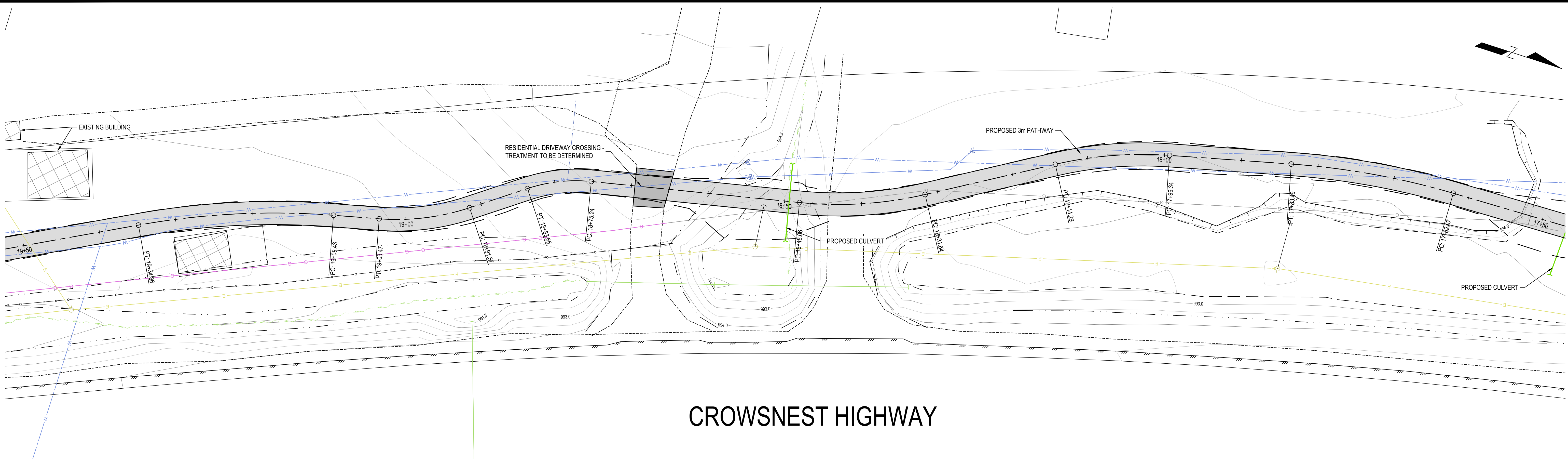
Drawing No.  
**C-305**

Project Number  
2441-01170-00

Rev.  
A

DESTROY ALL PRINTS BEARING PREVIOUS REVISION





Rev	Date	Description	Drawn	Design	App'd
A	2022/02/24	PRELIMINARY CONSULTATION COMPLETE - ISSUED FOR FINAL CONSULTATION	AD	TW	KM

THIS DRAWING AND DESIGN IS THE PROPERTY OF McELHANNEY AND SHALL NOT BE USED, REUSED OR REPRODUCED WITHOUT THE CONSENT OF McELHANNEY. McELHANNEY WILL NOT BE HELD RESPONSIBLE FOR THE IMPROPER OR UNAUTHORIZED USE OF THIS DRAWING AND DESIGN.

THIS DRAWING AND DESIGN HAS BEEN PREPARED FOR THE CLIENT IDENTIFIED, TO MEET THE STANDARDS AND REQUIREMENTS OF THE APPLICABLE PUBLIC AGENCIES AT THE TIME OF PREPARATION. McELHANNEY, ITS EMPLOYEES, SUBCONSULTANTS AND AGENTS WILL NOT BE LIABLE FOR ANY LOSSES OR OTHER CONSEQUENCES RESULTING FROM THE USE OR RELIANCE UPON, OR ANY CHANGES MADE TO, THIS DRAWING, BY ANY THIRD PARTY, INCLUDING CONTRACTORS, SUPPLIERS, CONSULTANTS AND STAKEHOLDERS, OR THEIR EMPLOYEES OR AGENTS, WITHOUT McELHANNEY'S PRIOR WRITTEN CONSENT.

INFORMATION ON EXISTING UNDERGROUND FACILITIES MAY NOT BE COMPLETE OR ACCURATE. McELHANNEY, ITS EMPLOYEES AND DIRECTORS ARE NOT RESPONSIBLE NOR LIABLE FOR THE LOCATION OF ANY UNDERGROUND CONDUITS, PIPES, CABLES OR OTHER FACILITIES WHETHER SHOWN OR OMITTED FROM THIS PLAN, PRIOR TO CONSTRUCTION. CONTRACTOR SHALL EXPOSE LOCATIONS OF ALL EXISTING FACILITIES BY HAND DIGGING OR HYDROVAC AND ADVISE THE ENGINEER OF POTENTIAL CONFLICTS.

ORIGINAL DWG SIZE: ANSI D (22" x 34")

0 1:250 10

PO Box 1505  
Unit C - 402 Highway 3  
Fernie BC  
Canada V0B 1M0  
T 250 425 0158

PRELIMINARY  
NOT FOR  
CONSTRUCTION

THIS DRAWING HAS NOT BEEN APPROVED  
AND MAY CONTAIN ERRORS AND OMISSIONS

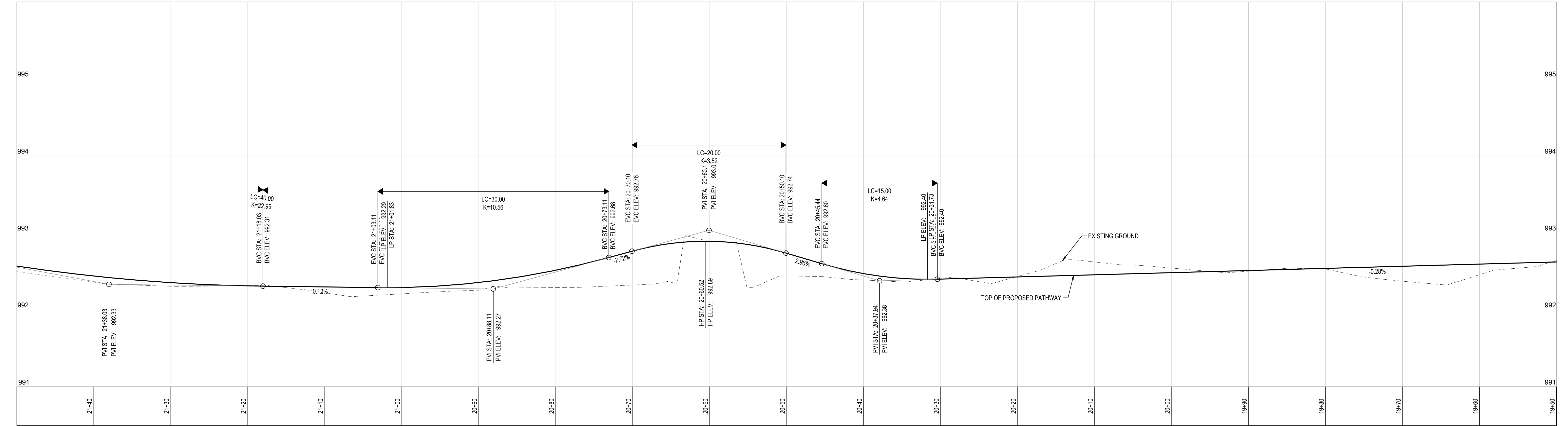
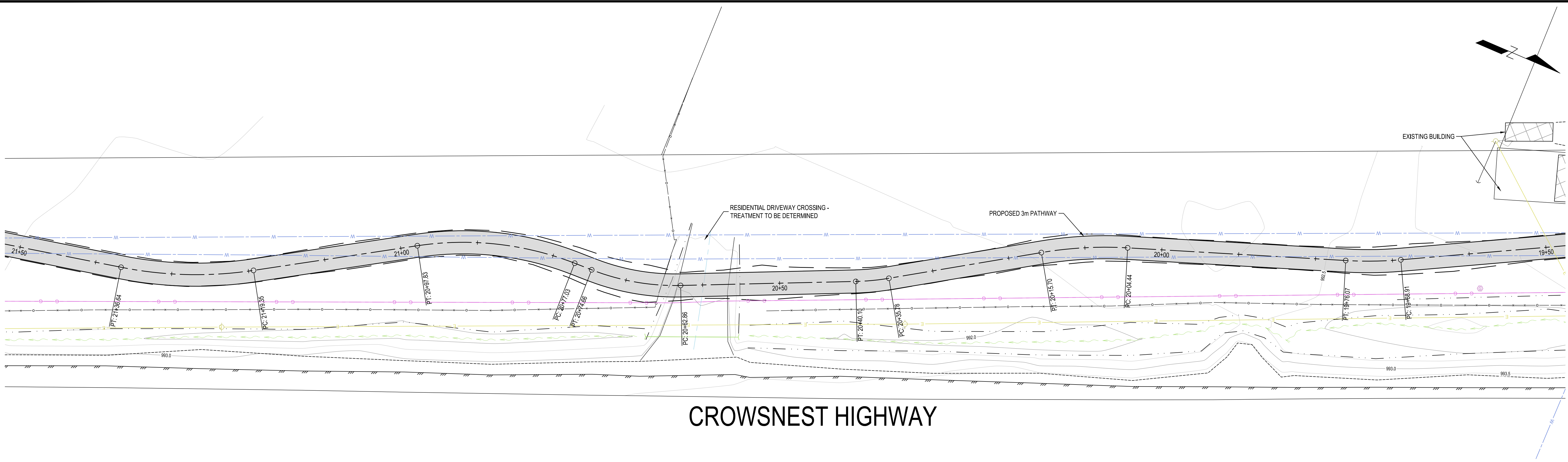
CITY OF FERNIE  
CITY HALL 501-3RD AVENUE, BOX 190, FERNIE B.C. V0B 1M0

FERNIE VALLEY PATHWAY  
SEGMENT 1B  
PLAN & PROFILE - SHEET 7 OF 9  
STA. 17+50 TO STA. 19+50

Drawing No.	C-306
Project Number	2441-01170-00
Rev.	A



DATE: 2022/02/24, 1:54, FILE: C:\Users\jdoyle\Documents\Working\Fernie\Plan\1C Drawings\1.3 Sheet\C-307 Plan and Profile.dwg, McElhanney ANS D - 202-12-03



Rev	Date	Description	Drawn	Design	App'd
A	2022/02/24	PRELIMINARY CONSULTATION COMPLETE - ISSUED FOR FINAL CONSULTATION	AD	TW	KM

THIS DRAWING AND DESIGN IS THE PROPERTY OF McELHANNEY AND SHALL NOT BE USED, REUSED OR REPRODUCED WITHOUT THE CONSENT OF McELHANNEY. McELHANNEY WILL NOT BE HELD RESPONSIBLE FOR THE IMPROPER OR UNAUTHORIZED USE OF THIS DRAWING AND DESIGN.

THIS DRAWING AND DESIGN HAS BEEN PREPARED FOR THE CLIENT IDENTIFIED, TO MEET THE STANDARDS AND REQUIREMENTS OF THE APPLICABLE PUBLIC AGENCIES AT THE TIME OF PREPARATION. McELHANNEY, ITS EMPLOYEES, SUBCONSULTANTS AND AGENTS WILL NOT BE LIABLE FOR ANY LOSSES OR OTHER CONSEQUENCES RESULTING FROM THE USE OR RELIANCE UPON, OR ANY CHANGES MADE TO, THIS DRAWING, BY ANY THIRD PARTY, INCLUDING CONTRACTORS, SUPPLIERS, CONSULTANTS AND STAKEHOLDERS, OR THEIR EMPLOYEES OR AGENTS, WITHOUT McELHANNEY'S PRIOR WRITTEN CONSENT.

INFORMATION ON EXISTING UNDERGROUND FACILITIES MAY NOT BE COMPLETE OR ACCURATE. McELHANNEY, ITS EMPLOYEES AND DIRECTORS ARE NOT RESPONSIBLE FOR THE LOCATION OF ANY UNDERGROUND CONDUITS, PIPES, CABLES OR OTHER FACILITIES WHETHER SHOWN OR OMITTED FROM THIS PLAN, PRIOR TO CONSTRUCTION. CONTRACTOR SHALL EXPOSE LOCATIONS OF ALL EXISTING FACILITIES BY HAND DIGGING OR HYDROVAC AND ADVISE THE ENGINEER OF POTENTIAL CONFLICTS.

ORIGINAL DWG SIZE: ANSI D (22" x 34")



PO Box 1505  
Unit C - 402 Highway 3  
Fernie BC  
Canada V0B 1M0  
T 250 425 0158

PRELIMINARY  
NOT FOR  
CONSTRUCTION

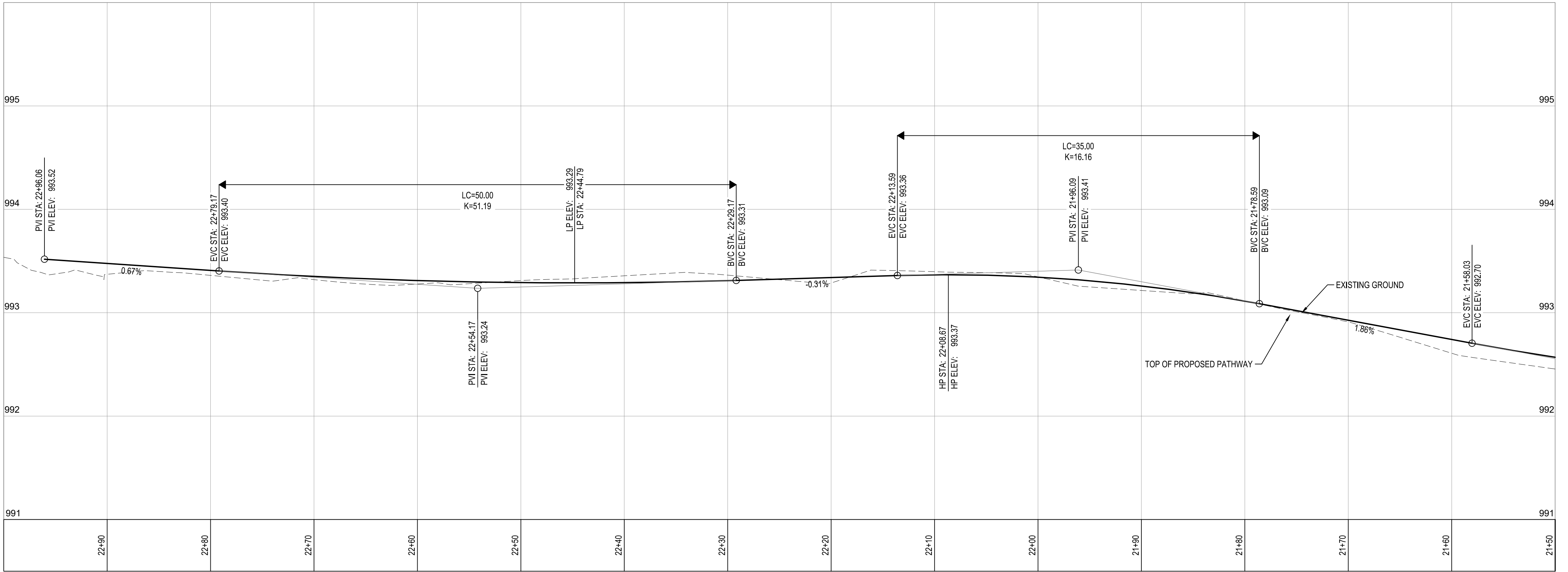
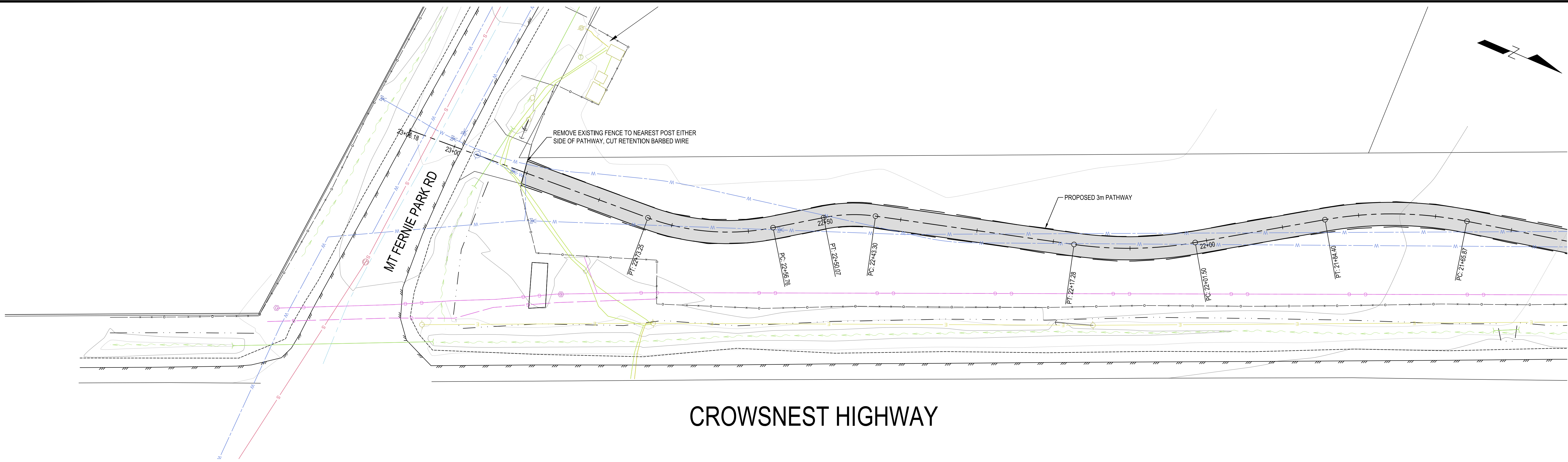
THIS DRAWING HAS NOT BEEN APPROVED  
AND MAY CONTAIN ERRORS AND OMISSIONS

CITY OF FERNIE  
CITY HALL 501-3RD AVENUE, BOX 190, FERNIE B.C. V0B 1M0  
FERNIE VALLEY PATHWAY  
SEGMENT 1B  
PLAN & PROFILE - SHEET 8 OF 9  
STA. 19+50 TO STA. 21+50

Drawing No.  
**C-307**  
Project Number  
2441-01170-00  
Rev.  
A

DESTROY ALL PRINTS BEARING PREVIOUS REVISION





Rev	Date	Description	Drawn	Design	App'd
A	2022/02/24	PRELIMINARY CONSULTATION COMPLETE - ISSUED FOR FINAL CONSULTATION	AD	TW	KM

THIS DRAWING AND DESIGN IS THE PROPERTY OF McELHANNEY AND SHALL NOT BE USED, REUSED OR REPRODUCED WITHOUT THE CONSENT OF McELHANNEY. McELHANNEY WILL NOT BE HELD RESPONSIBLE FOR THE IMPROPER OR UNAUTHORIZED USE OF THIS DRAWING AND DESIGN.

THIS DRAWING AND DESIGN HAS BEEN PREPARED FOR THE CLIENT IDENTIFIED. TO MEET THE STANDARDS AND REQUIREMENTS OF THE APPLICABLE PUBLIC AGENCIES AT THE TIME OF PREPARATION. McELHANNEY, ITS EMPLOYEES, SUBCONSULTANTS AND AGENTS WILL NOT BE LIABLE FOR ANY LOSSES OR OTHER CONSEQUENCES RESULTING FROM THE USE OR RELIANCE UPON, OR ANY CHANGES MADE TO, THIS DRAWING BY ANY THIRD PARTY, INCLUDING CONTRACTORS, SUPPLIERS, CONSULTANTS AND STAKEHOLDERS, OR THEIR EMPLOYEES OR AGENTS, WITHOUT McELHANNEY'S PRIOR WRITTEN CONSENT.

INFORMATION ON EXISTING UNDERGROUND FACILITIES MAY NOT BE COMPLETE OR ACCURATE. McELHANNEY, ITS EMPLOYEES AND DIRECTORS ARE NOT RESPONSIBLE NOR LIABLE FOR THE LOCATION OF ANY UNDERGROUND CONDUITS, PIPES, CABLES OR OTHER FACILITIES WHETHER SHOWN OR OMITTED FROM THIS PLAN. PRIOR TO CONSTRUCTION, CONTRACTOR SHALL EXPOSE LOCATIONS OF ALL EXISTING FACILITIES BY HAND DIGGING OR HYDROVAC AND ADVISE THE ENGINEER OF POTENTIAL CONFLICTS.

ORIGINAL DWG SIZE: ANSI D (22" x 34")

0 1:250 10



PO Box 1505  
Unit C - 402 Highway 3  
Fernie BC  
Canada V0B 1M0  
T 250 425 0158

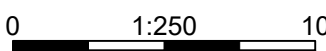
PRELIMINARY  
NOT FOR  
CONSTRUCTION

THIS DRAWING HAS NOT BEEN APPROVED  
AND MAY CONTAIN ERRORS AND OMISSIONS

CITY OF FERNIE  
CITY HALL 501-3RD AVENUE, BOX 190, FERNIE B.C. V0B 1M0  
FERNIE VALLEY PATHWAY  
SEGMENT 1B  
PLAN & PROFILE - SHEET 9 OF 9  
STA. 21+50 TO STA. 23+06.40

Drawing No.  
**C-308**  
Project Number  
2441-01170-00  
Rev.  
A



[illegible]