

FAIRVERN

Community Information Session

Thursday, July 28, 2022



Fairvern Redevelopment Community Information Session

Agenda

- Introductions / Hosts
- Update on Redevelopment Project Updates
 - Project Activities/Timing
 - Project Detailed Design
- Current Operations
- Special Events
 - Celebration of Transition of Operations – June 30, 2022
 - Anniversary Celebration and Ground-breaking New Site – Aug. Informed2
- Stay informed



Tonight's Hosts

- Norm Barrette

- Commissioner of Health Services

- Jeff Yeo

- Director, Facilities and Support Services

- Tony Ross

- Principal, Montgomery Sisam Architects Inc.

- Carrie Acton

- Administrator, Fairvern



Redevelopment Project Activities

Activity	Timing
Final Design and Site Preparation (Tree and rock removal, preliminary grading)	Underway (expect to be completed by year end)
Construction Tendering	Released early 2023
Construction	Begins later 2023
Occupancy	2025

From the construction timeline included in the application to the Ministry of Long-Term Care, the construction project is within 6 months of completion of the original plan.



CENTRE STREET SITE

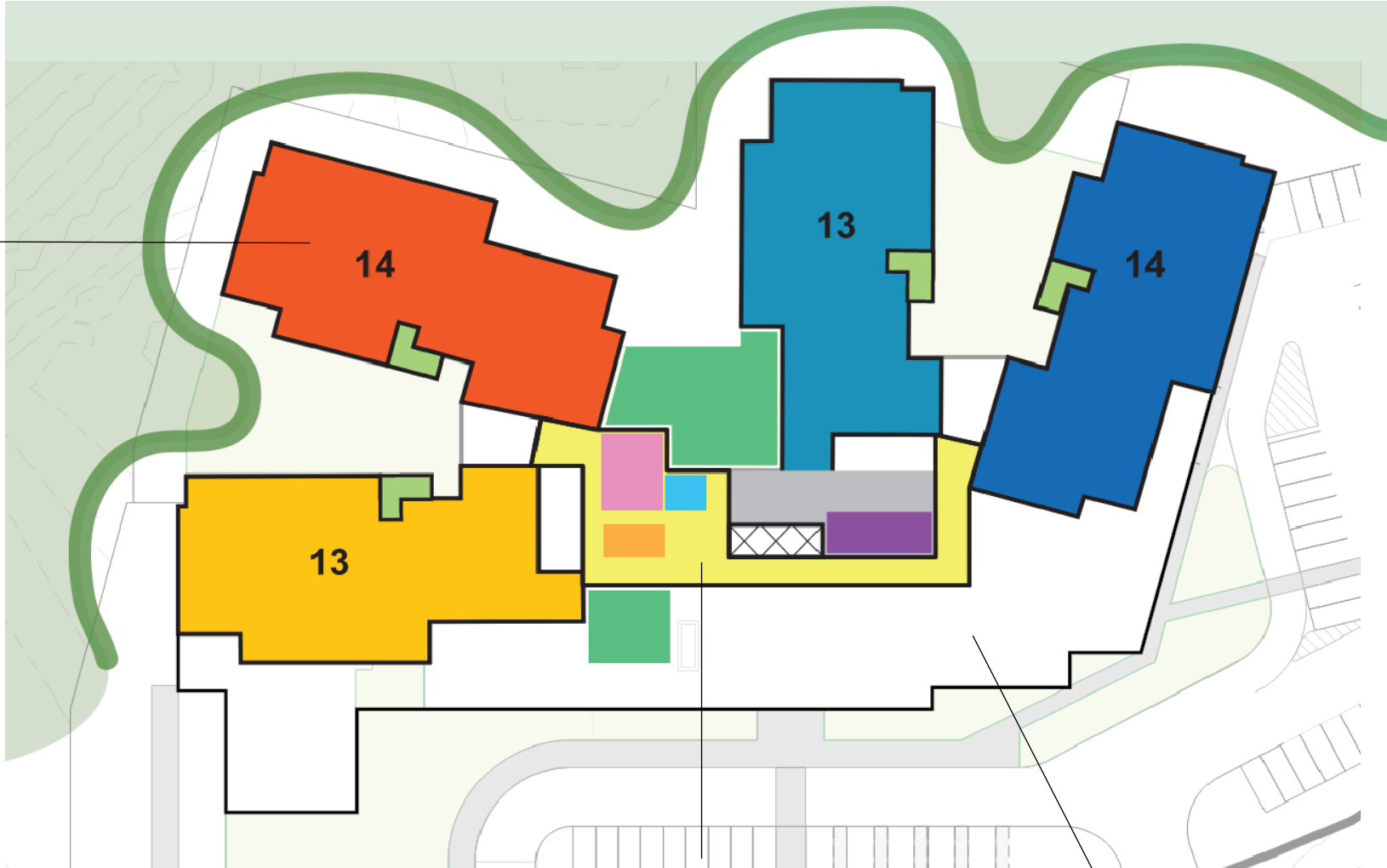


- 7.32 acres in size
- East side of Centre Street North
- Between West Road and Hanes Road
- Visible from Centre Street
- Generous front on new municipal road
- Backing onto protected greenspace

DESIGN CONCEPTS

SMALL HOME

THE SMALL
HOME



THE NEIGHBOURHOOD

THE MAIN STREET

FUNDAMENTAL PRINCIPLES

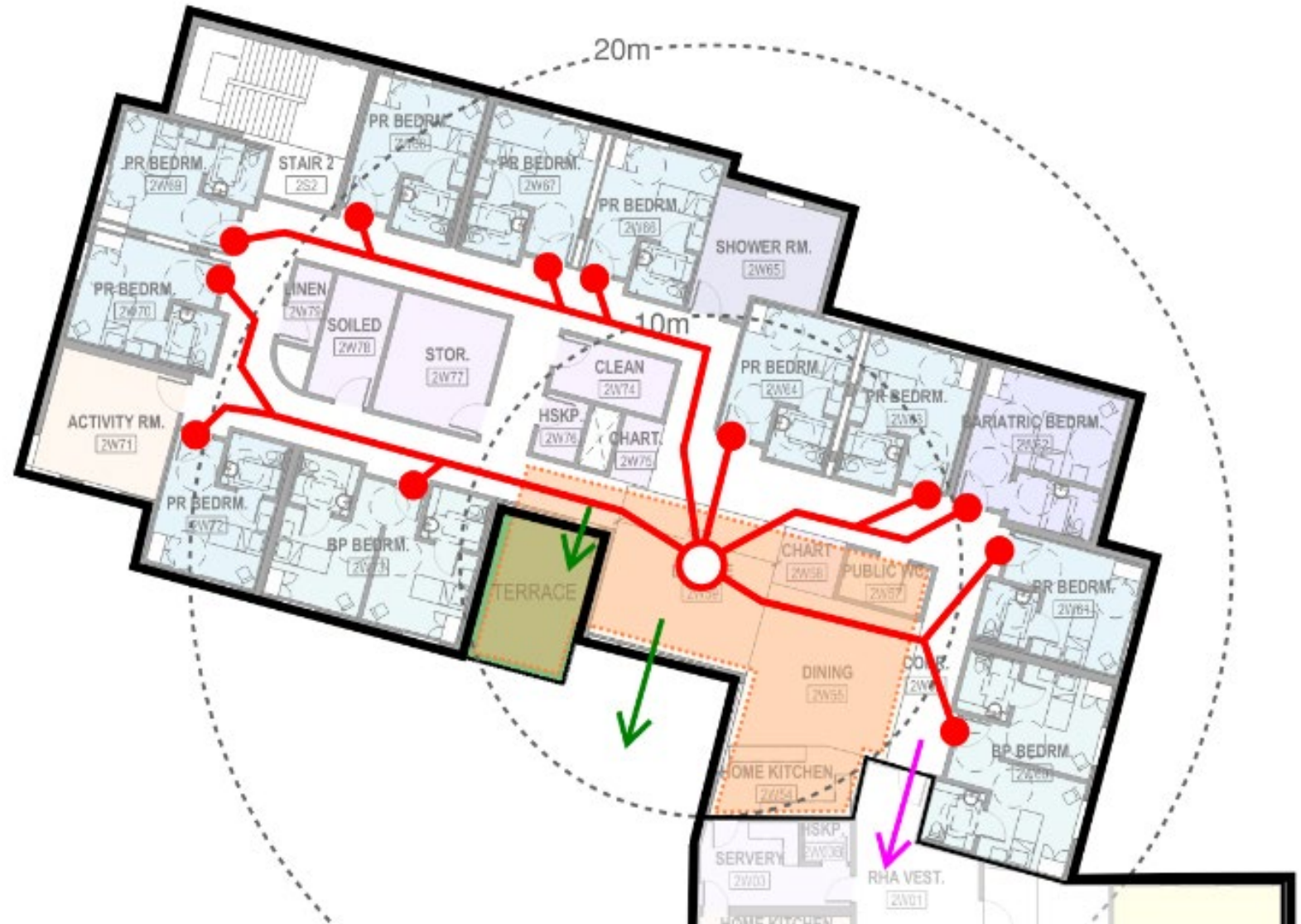
- A high quality building made for generations (including best-practice Infection Prevention and Control)
- A design based on a social model not medical model
- A building that supports resident independence and quality of life
- Desirable work environment
- Technology to be harvested at every opportunity

CRITICAL DESIGN DECISIONS TO DATE

- Small Home Design
- Small Home Dining
- Progressive and Innovative Food Service Model
- Unit Mix – 60% Private, 40% Basic Private
- Room Types – Every Resident has their own Washroom
- High Quality Space for Staff
- Best-Practice Infection Prevention and Control

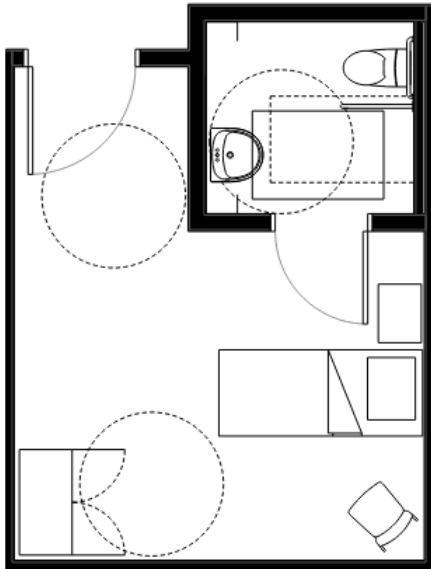
THE SMALL HOME

Live
Eat
Bathe
Sleep
Visit
Nature
Support



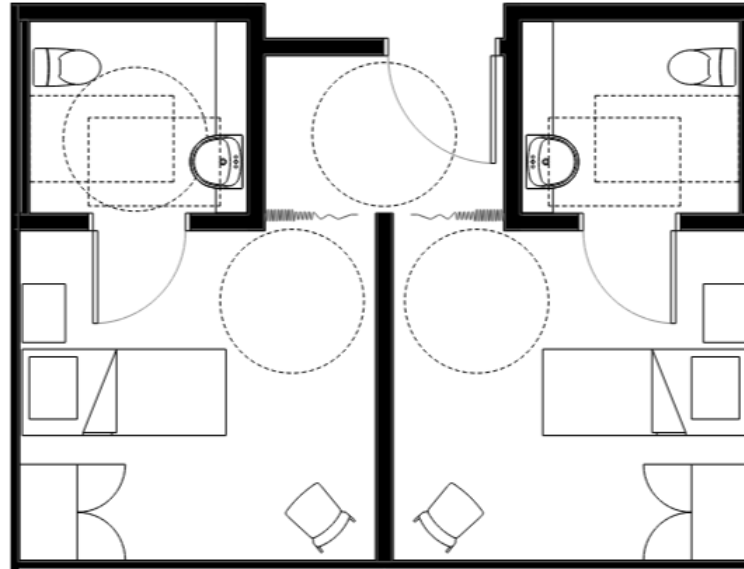
RESIDENT ROOMS

PRIVATE



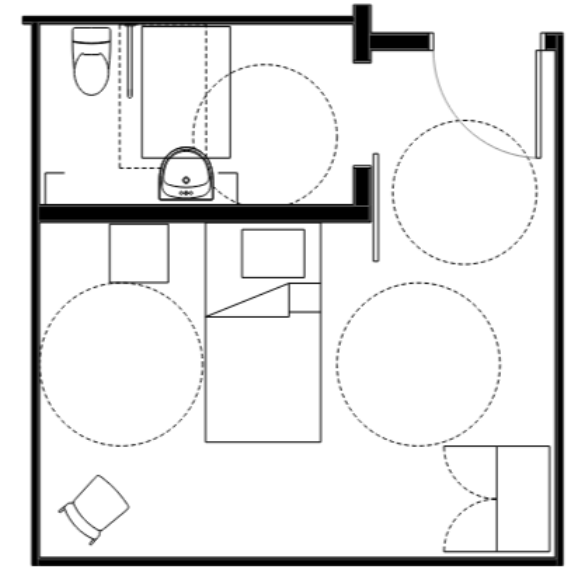
59%

BASIC PRIVATE



37%

BARIATRIC PRIVATE



4%

COUPLES ROOM?

TECHNICAL DESIGN CONCEPTS | IPAC

- Building Level Solutions
 - HVAC systems will have an 'outbreak or pandemic mode' - outside air, air changes, humidity.
 - Program space redundancy – some spaces will be planned for second mode of operation during outbreaks.
 - Generous corridor widths.
 - Real Time Locating Systems (RTLS).
 - Enhanced IT for remote conferencing.
 - Areas that exceed the Ministry minimum - ie. dining rooms.
 - IPAC approved finishes.
 - Improved access to handwashing.
- Resident Level Solutions
 - All residents will have their own washroom – dignity and quality of life
 - Residents will live and eat in subclustered (cohorted) groups of 13 or 14 (instead of 32).
 - PPE storage for all resident rooms at the entry.

TECHNICAL DESIGN CONCEPTS | RESILIENCE & SUSTAINABILITY

A progressive but 'common sense' approach

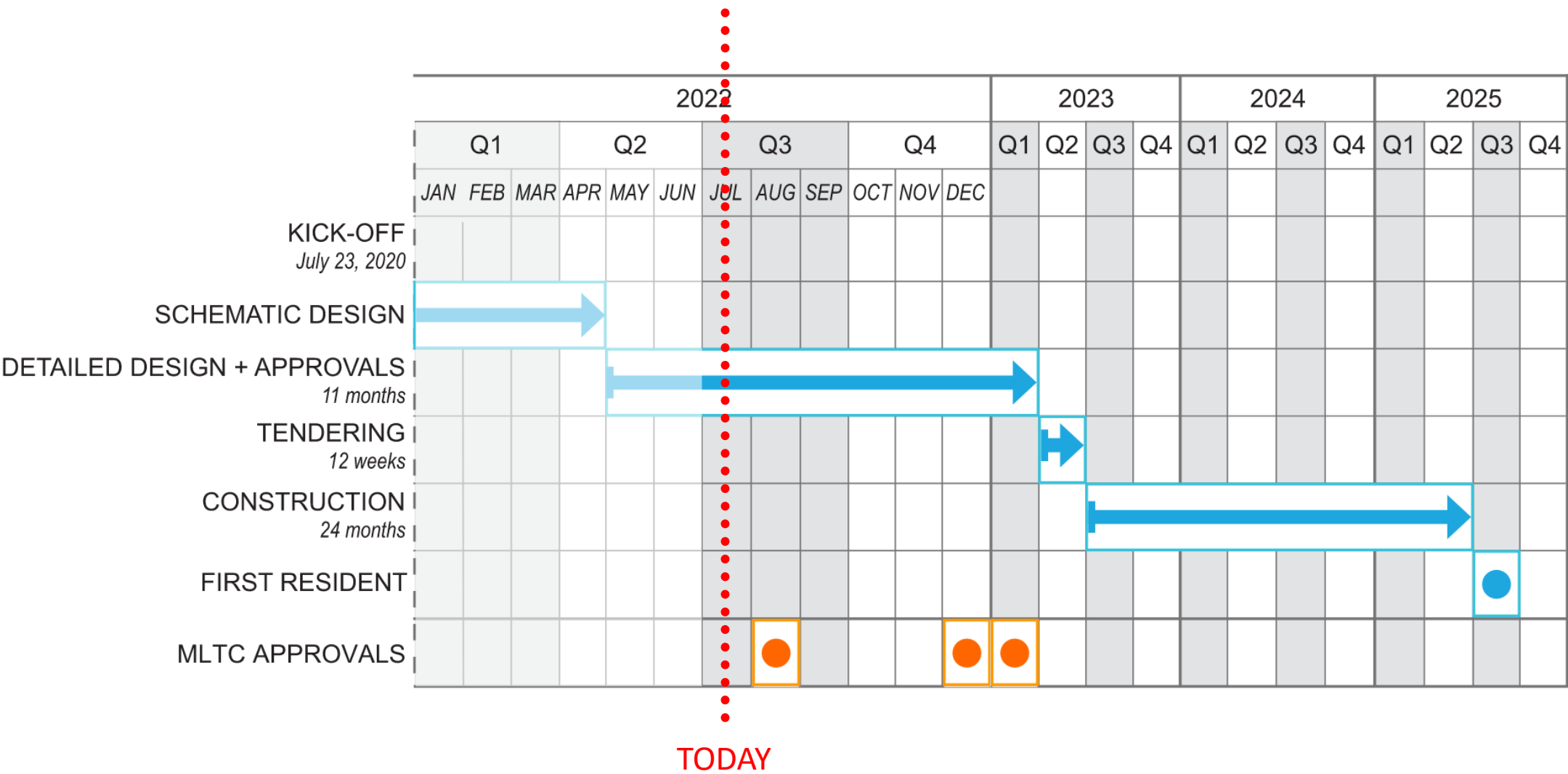
- A High Performance Building Envelope
- Efficient HVAC systems
 - Air Source Heat Pump - a low carbon electric approach; with diminished reliance on fossil fuels
 - Energy Recovery - HVAC system, plumbing system
 - Strategic placement of HVAC units - direct down to small Homes
 - In-floor heating systems - high efficiency; low carbon
 - Indoor / protected AHUs - durability / longevity / maintenance
- Durability
 - A building that could last for generations
- Efficient Electrical Technologies
 - LED lighting
 - Lighting Control
 - Building Automation
 - Renewables

RESIDENT HOME AREA ACHIEVEMENTS

- Meaningful Small Home subclusters of 13/14 residents
- A strong Social Heart that is centered in the plan form
- An efficient operational 'twinning' of Small Home areas
- Access to each Small Home without passing through another
- A meaningful destination within each Small Home
- A meaningful destination on each floor outside the household
- Small Home dining and food service model innovation
- Generous and meaningful outdoor space
- An endless wandering path in the household design
- Vestibuled rooms for resident privacy and dignity
- A washroom for every resident
- A direct line of sight from resident bed to washroom
- A residential scale to corridor modules
- Bathing areas with access to natural light



SCHEDULE



Current Home Operations

- Very few changes to operations post-transition
- Alignment of procedures and back office operations – Pines and Fairvern
- Current operations at a glance:
 - 56 Residents on two floors in the Home.
 - Home provides 24-hour care including Nursing, Medical, Life Enrichment, Physiotherapy, Laundry and Housekeeping.
 - Medical Director for the home provides care and input into the operations as well as oversight of Attending Physicians.



Special Events:

- **Transition Celebration Event**
 - Thank you for joining us on June 30, 2022!
- **Save the Date: Aug 11, 2022**
 - Redevelopment Site Ground-Breaking
 - 40th Anniversary Celebration – 2:00 p.m.



Have your say!

Provide your input into the
redevelopment project:

www.engagemuskoka.ca/fairvern

Survey and tonight's presentation are available tomorrow

