

# Elvidge Trail Parkette

## Public Information Centre

November 13, 2025





# Introductions and Agenda

## **Town of Newmarket**

Michael Ashworth, Senior Capital Project Manager

## **Shift Landscape Architecture**

Michael Barker, Principal

Julia Taucer, Landscape Architect

1. Introductions and Agenda
2. Background
3. Context Map
4. Concept Plan
5. Playground Equipment
6. Furnishings
7. Closing
8. Q&A





# Background

## Previous Consultation

- **Previously:** There was a public meeting with the Ward Councillor, Deputy Mayor and Recreation & Culture staff.
- **We heard:** a range of opinions, and the parkette was selected as a compromise between a strong desire among some for play space, and a preference from others to focus the play space further away at the environmental park.
- **Since that time:** staff have been working to secure a suitable site.

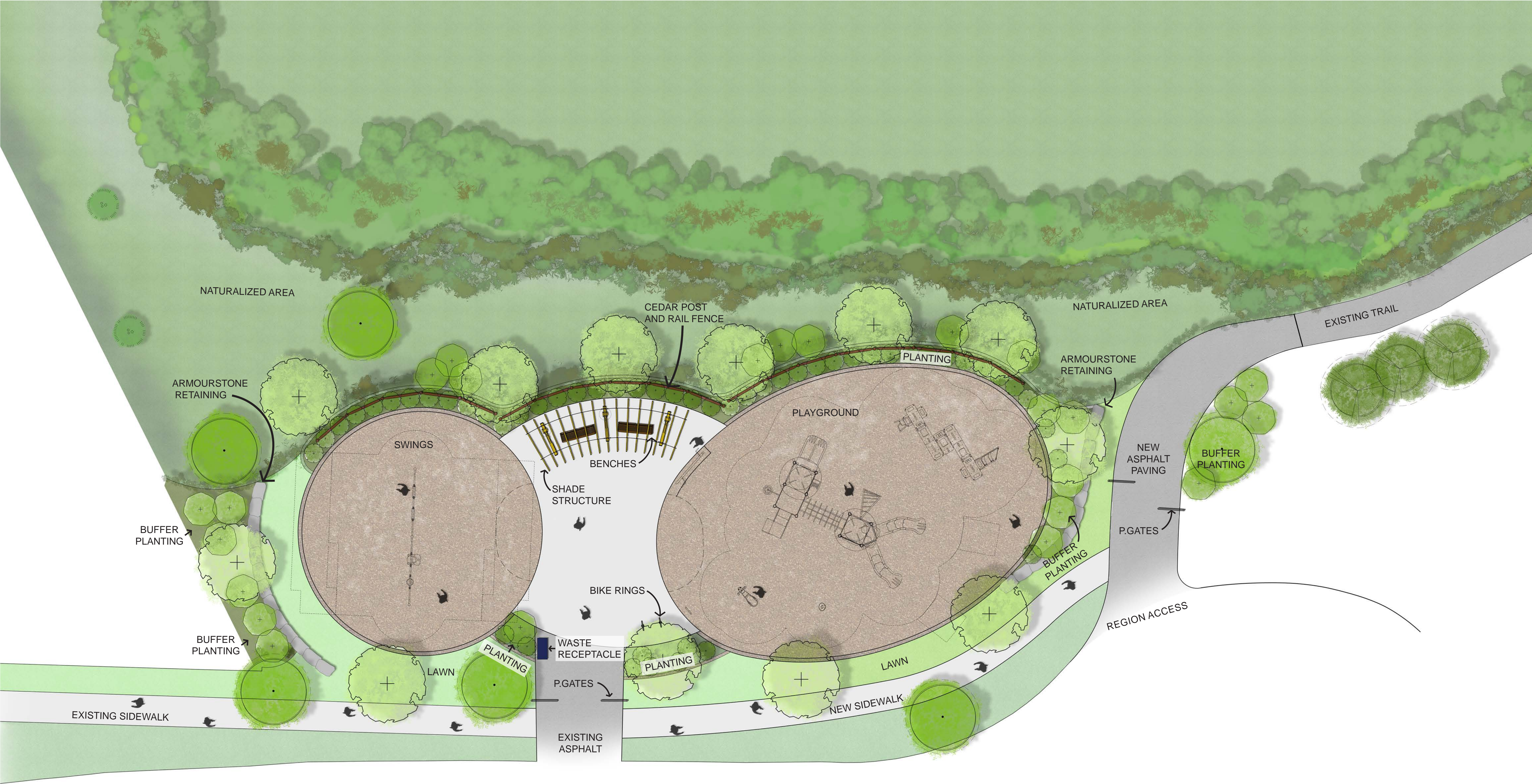


CONTEXT MAP

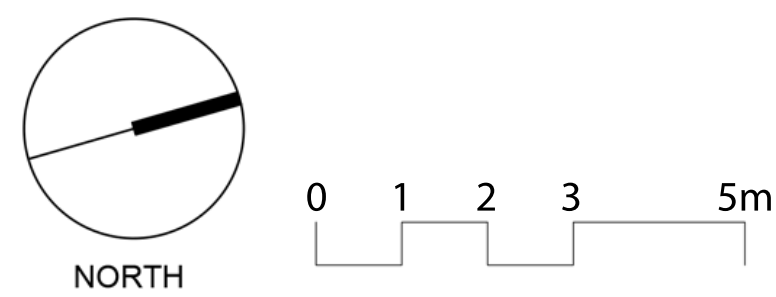




CONCEPT PLAN

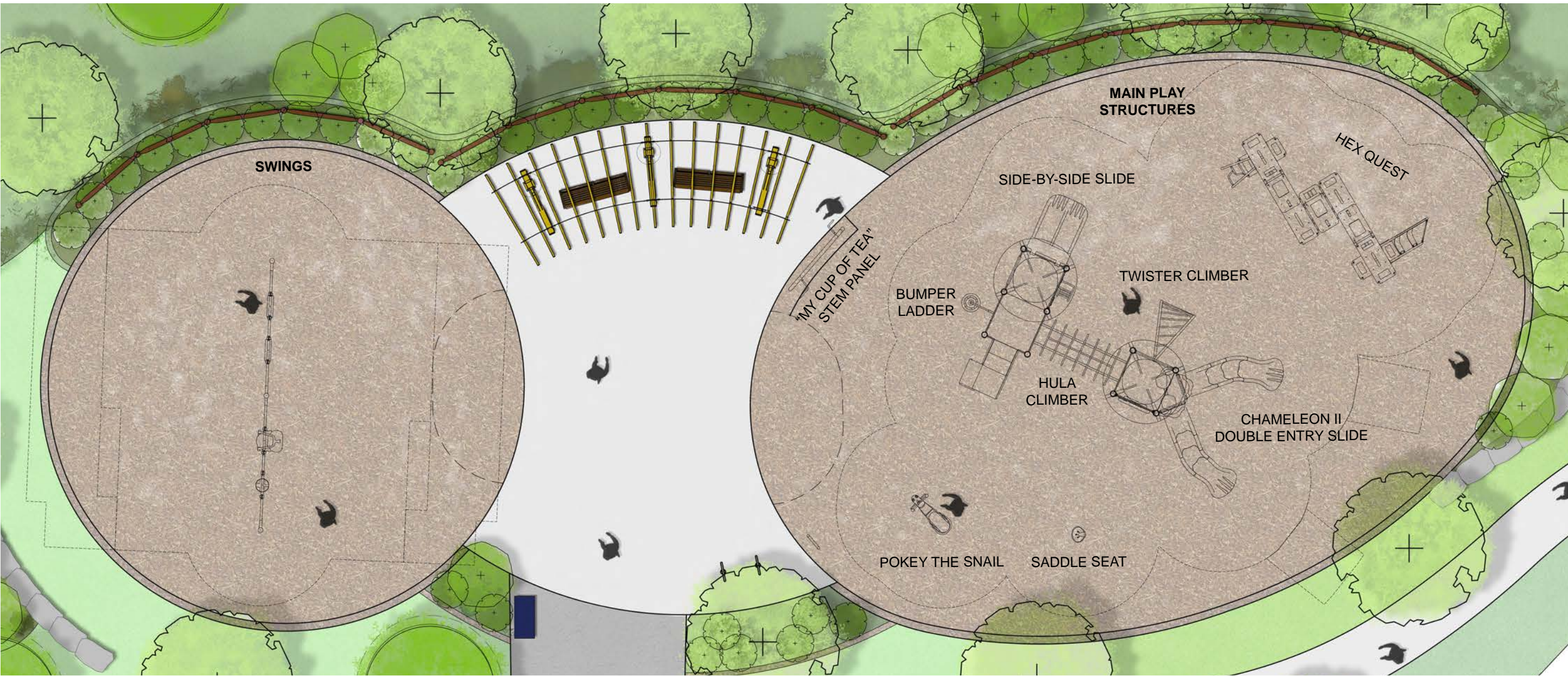


ELVIDGE TRAIL



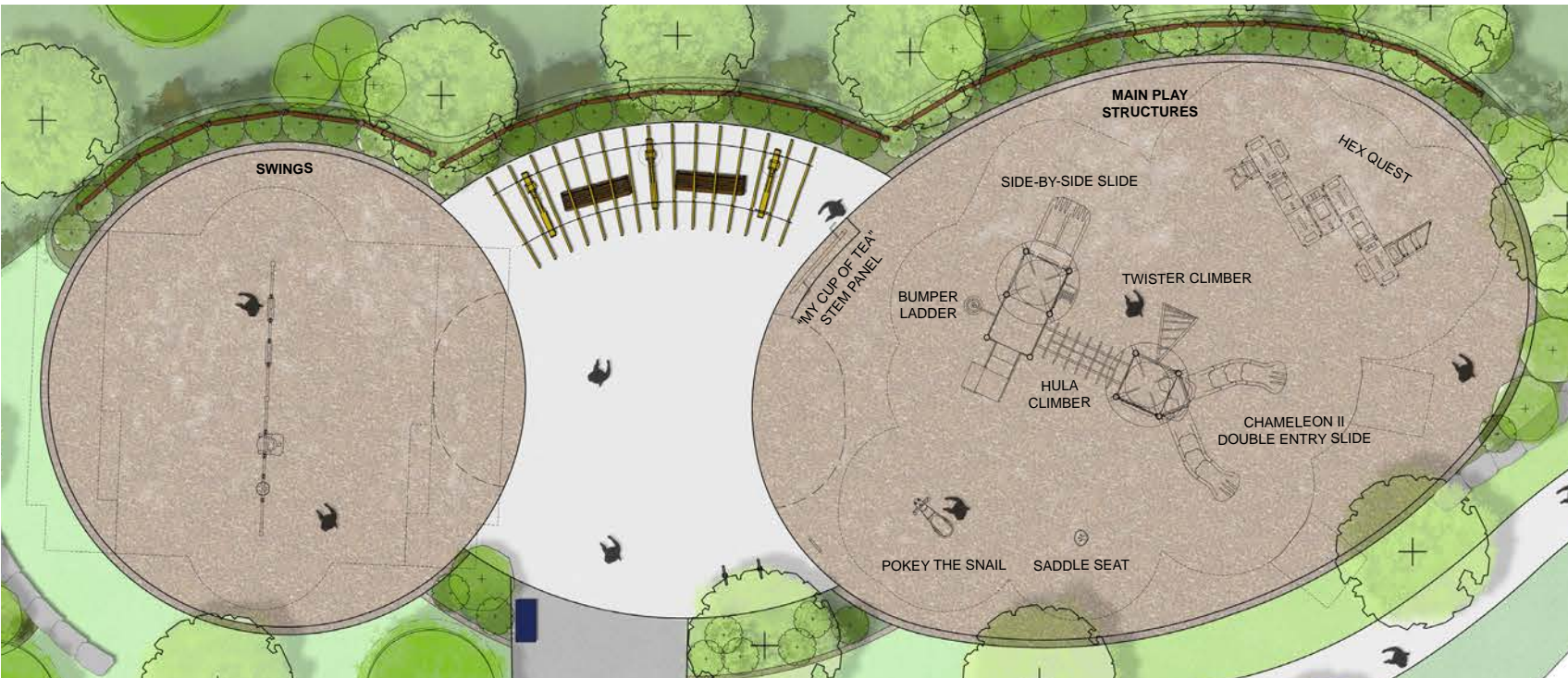


# PLAYGROUND EQUIPMENT





# PLAYGROUND EQUIPMENT





FURNISHINGS



WASTE RECEPTACLES



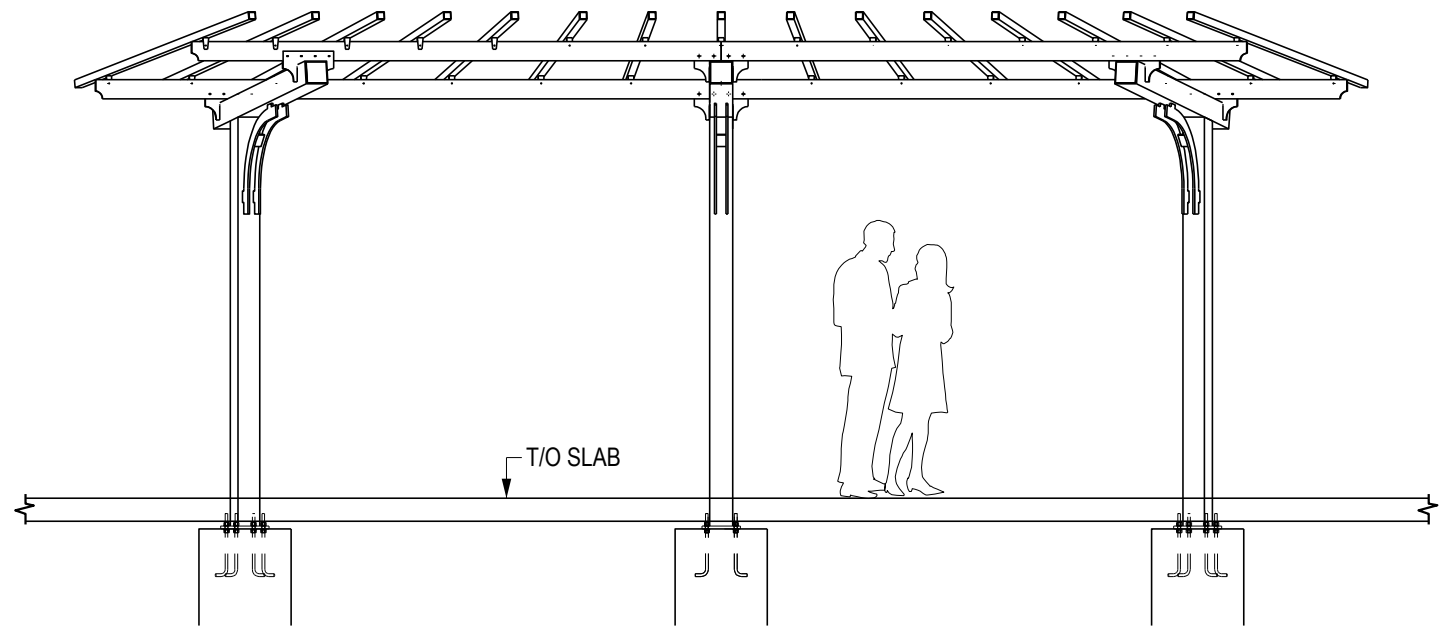
BICYCLE RINGS



BENCHES



TRELLIS STYLE (Proposed trellis will vary)



PROPOSED TRELLIS



PROVISIONAL PICNIC TABLE





# Closing

Stay connected!

**Hey Newmarket**

<https://www.heynewmarket.ca/Elvidge>  
[info@heynewmarket.ca](mailto:info@heynewmarket.ca)

**Michael Ashworth**

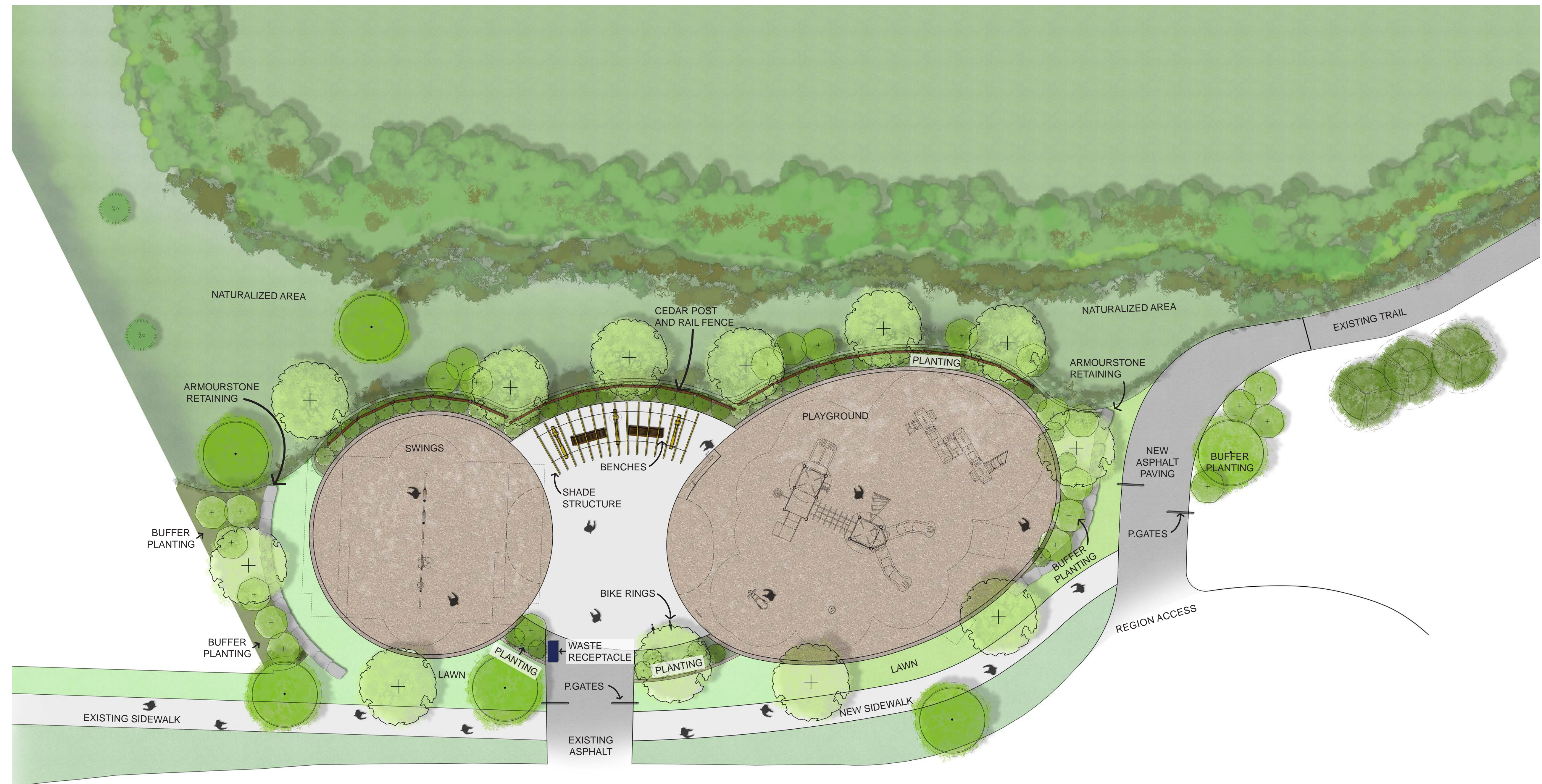
[mashworth@newmarket.ca](mailto:mashworth@newmarket.ca)

**Ward Councillor Bisanz**

[cbisanz@newmarket.ca](mailto:cbisanz@newmarket.ca)



# Q&A



ELVIDGE TRAIL