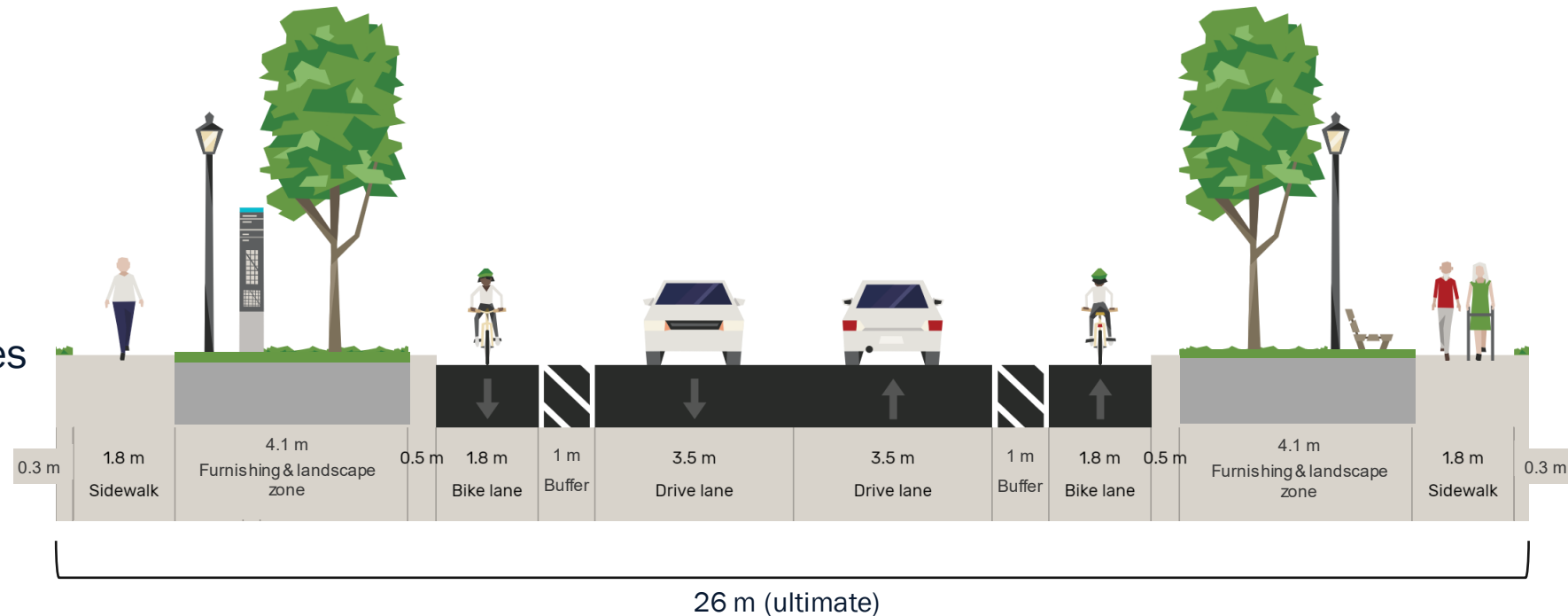


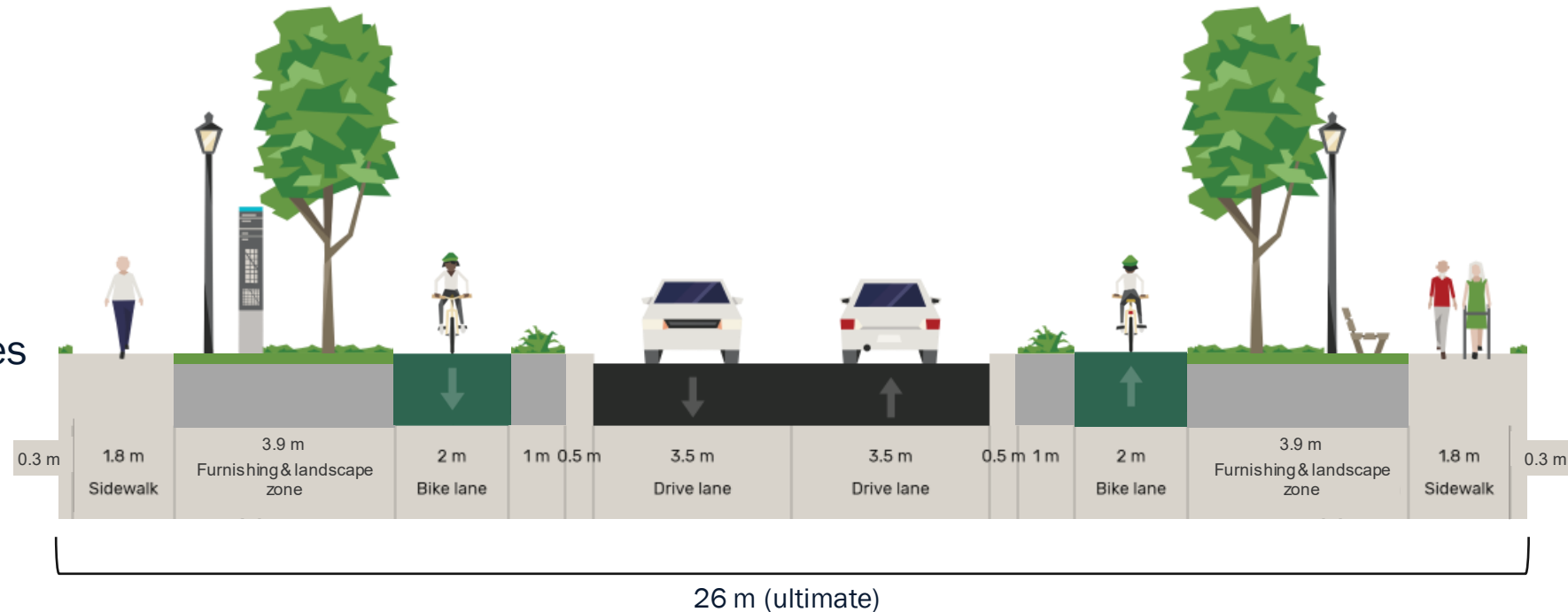
OPTION #1: ON-ROAD BIKE LANE

- 1.8 m sidewalks on both sides.
- 4.1 m furnishing and landscape zone on both sides for street lighting, utilities, landscaping, furniture, and amenities.
- 1.8 m on-road bicycle lane on both sides.
- 1 m buffer to separate bike lane from travel lanes.
- Two 3.5 m through travel lanes



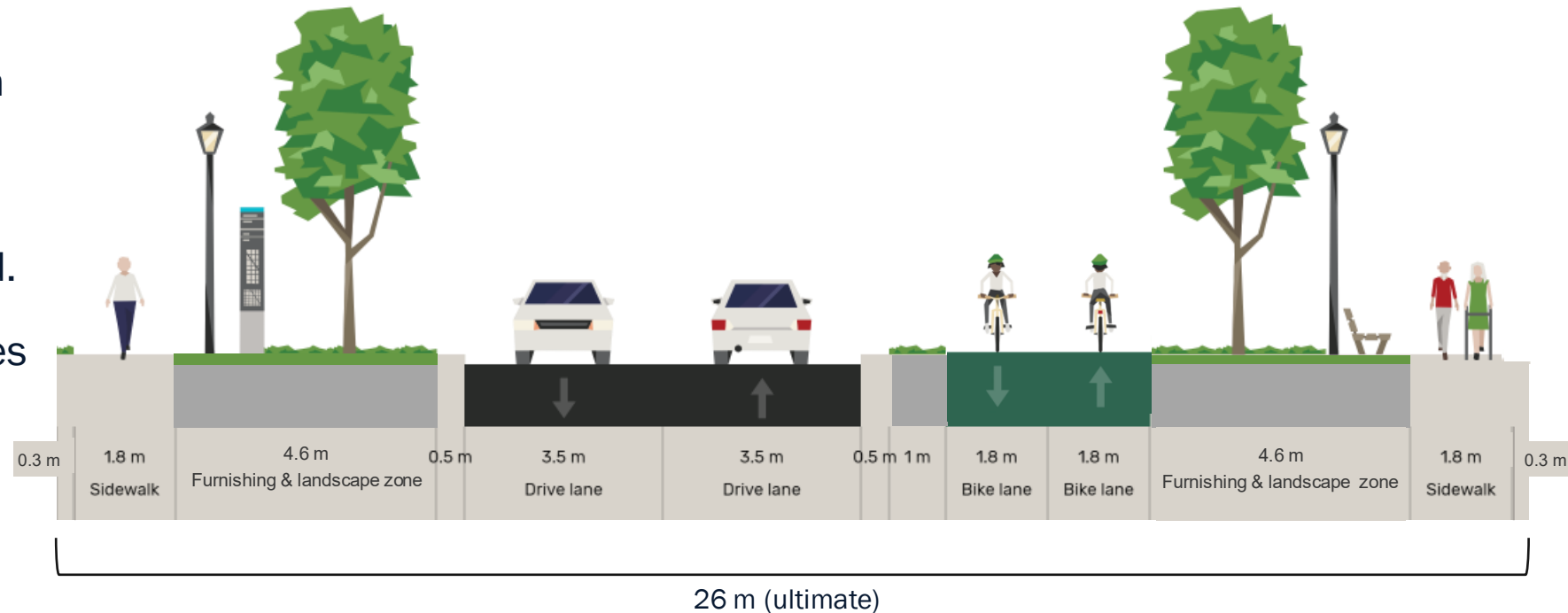
OPTION #2: ONE-WAY CYCLE TRACK

- 1.8 m sidewalks on both sides.
- 3.9 m furnishing and landscape zone on both sides for street lighting, utilities, landscaping, furniture, and amenities.
- 2.0 m one-way cycle track on both sides.
- 1 m buffer to separate cycle track from road.
- Two 3.5 m through travel lanes



OPTION #3: TWO-WAY CYCLE TRACK

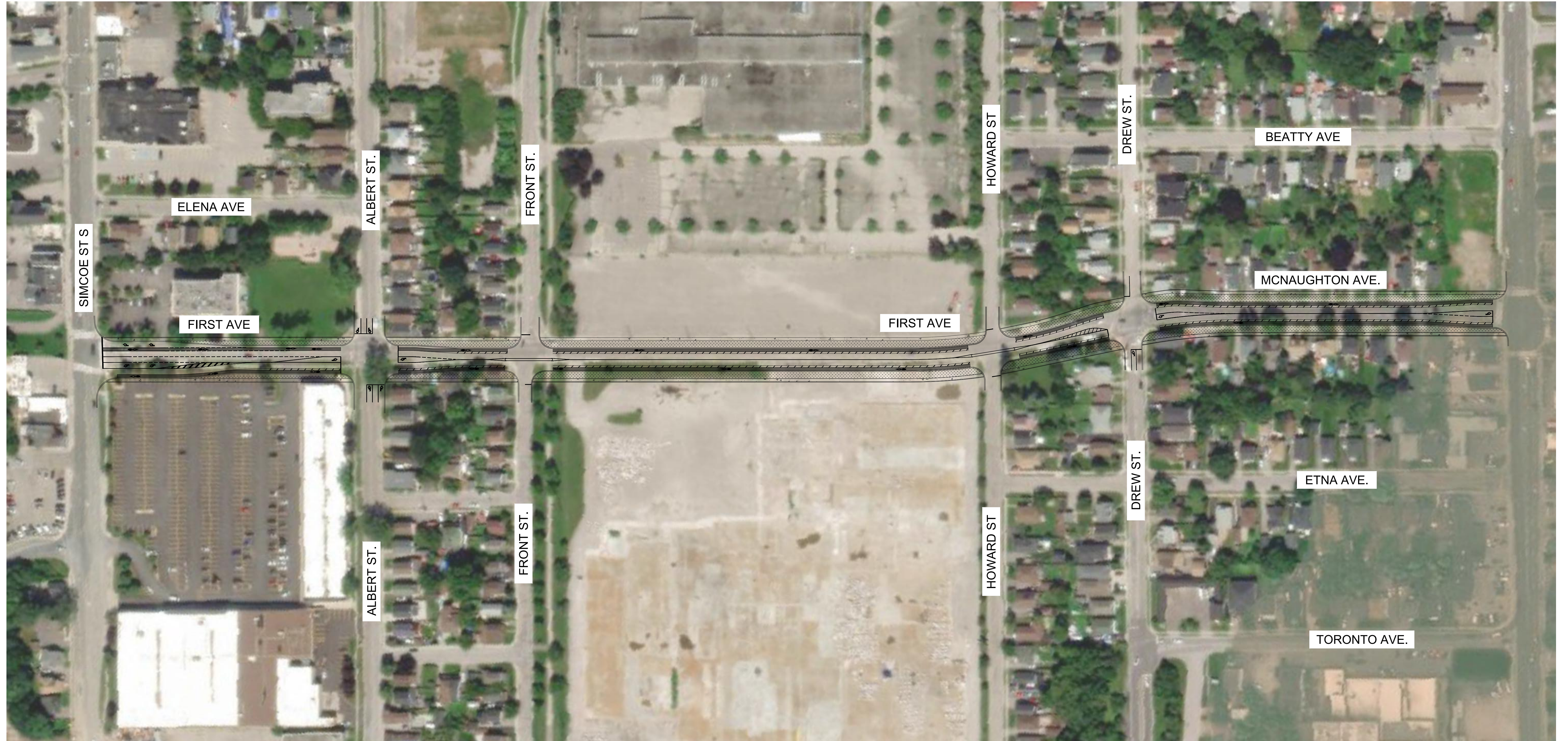
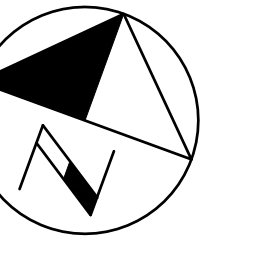
- 1.8 m sidewalks on both sides.
- 4.6m furnishing and landscape zone on both sides for street lighting, utilities, landscaping, furniture, and amenities.
- 3.6 m above-grade bidirectional cycling facility on the south side.
- 1 m buffer separating the cycling facilities from the road.
- Two 3.5 m through travel lanes with a 0.25 m curb on both sides.
- Two 3.5 m through travel lanes with a 0.25 m curb on both sides.



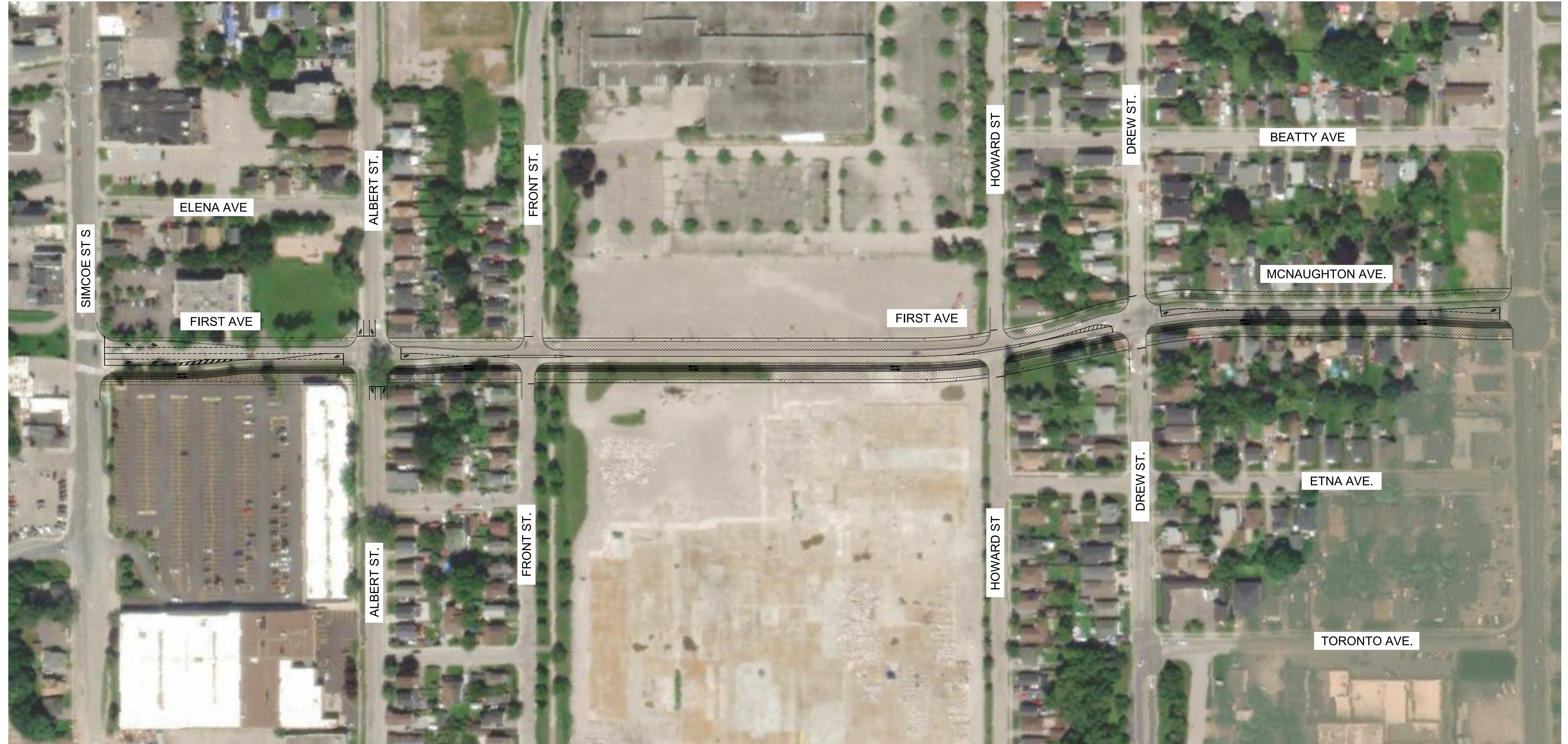
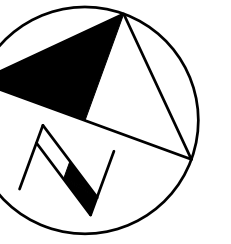
ALTERNATIVE DESIGN CONCEPTS

- Alternative design concepts are being prepared for First Ave./McNaughton Ave. which reflect the three cross-section options
- Intersection lane configurations reflect recommendations from the completed operational analysis
- Design criteria are based on current City of Oshawa design standards and leading industry guidelines
- The design concepts will be posted on Connect Oshawa for review and comment through the remainder of this consultation period
- Following this consultation period, a preferred design will be identified and refined through the next stage of the project





<p>SCALE</p> <p>NOT TO SCALE</p>		<p>STAMP</p>		<table border="1"> <tr> <td>NO.</td> <td>DATE</td> <td>BY</td> <td>REVISIONS</td> </tr> <tr> <td>DESIGN</td> <td></td> <td>CHKD</td> <td>DATE</td> </tr> <tr> <td>DRAWN</td> <td></td> <td>CHKD</td> <td></td> </tr> </table>		NO.	DATE	BY	REVISIONS	DESIGN		CHKD	DATE	DRAWN		CHKD		<p>PARSONS</p>		<p>OPTION 1</p> <p>ON ROAD BIKE LANE</p>	
						NO.	DATE	BY	REVISIONS												
DESIGN		CHKD	DATE																		
DRAWN		CHKD																			
<p>CONSULTANT FILE NO.</p> <p>CONTRACT NO.</p>		<p>REGIONAL DRAWING NO.</p> <p>DRAWING NO.</p> <p>SHEET 1 OF 3</p>																			



SEE COVER SHEET FOR REGIONAL ACCEPTANCE SCALE NOT TO SCALE	STAMP		PARSONS	OPTION 3 TWO WAY CYCLE TRACK	
		NO. DATE BY REVISIONS			
		DESIGN CH'KD DATE DRAWN CH'KD			
				CONSULTANT FILE NO. REGIONAL DRAWING NO.	
				CONTRACT NO. DRAWING NO. SHEET 3 OF 3	