

BOULTBEE DRIVE COMMUNITY PARK

PHASE 1 IMPROVEMENTS - 2022

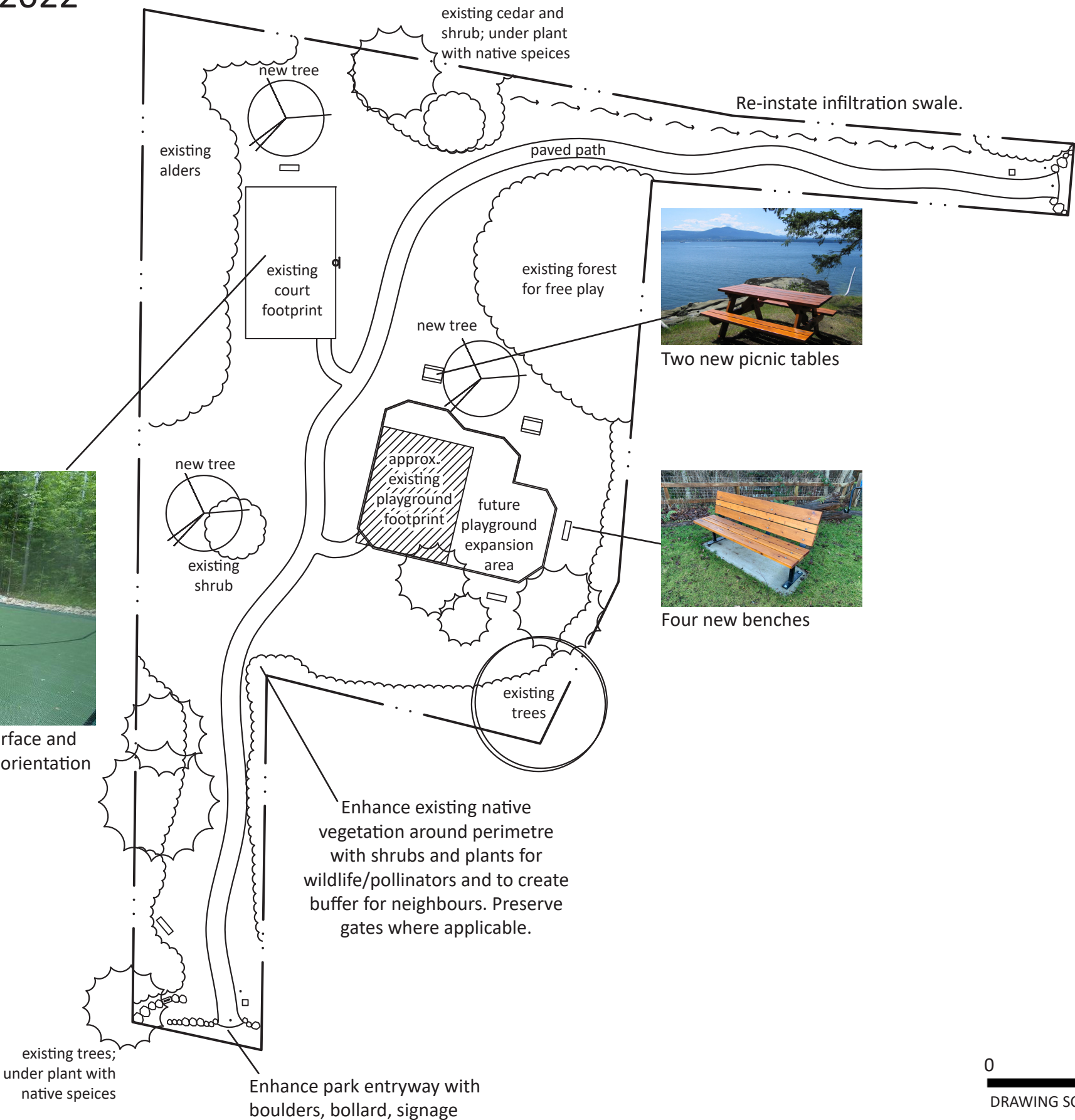


Phase 1 improvements will include the following:

- Enhanced park entrances with boulders, bollards, and new park signage
- Asphalt pathway through park
- New sport court surfacing with basketball hoop
- Four benches and two picnic tables
- Garbage receptacle in park
- Tree replacement plantings
- Landscape restoration



Refurbish existing 1/2-basketball surface and upgrade with proper hoop height / orientation and line markings.



Two new picnic tables



Four new benches

Enhance entryway with boulders, bollard, signage



BOULTBEE DRIVE COMMUNITY PARK

PHASE 2 IMPROVEMENTS - 2026



Phase 2 improvements will include the following:

- Removal of existing playground
- New expanded playground area with concrete curbs, accessible ramp, and playground safety mulch surface
- New play structure for multiple age groups
- New swing set, spinner, and monkey bars



Example playground equipment with slides and climbing features for ages 5-12 and additional elements for ages 2-5.



Spinner



Example monkey bars



Basket swing



New swing set

