

# Comprehensive Integrated Waste Management Strategy Review (CIWMS)

*Open house event | Phase 2 engagement*



# Project background

## What is the CIWMS?

The Comprehensive Integrated Waste Management Strategy (CIWMS) is the City of Winnipeg's plan for managing garbage and recycling. The CIWMS was approved by City Council in 2011. It guides how Winnipeg collects, sorts, and gets rid of garbage and recycling.

This plan helps keep the city clean, reduces waste, and helps protect the environment by ensuring that things get reused or recycled whenever possible. It also provides a roadmap for new programs and services that help fight climate change.



Environment



Social



Economic

## Why a review?

Winnipeg manages close to 500,000 tonnes of waste a year. The environmental, economic, and social impacts of that waste affect all of us. The CIWMS was first written in 2011 and a lot has changed since then such as:

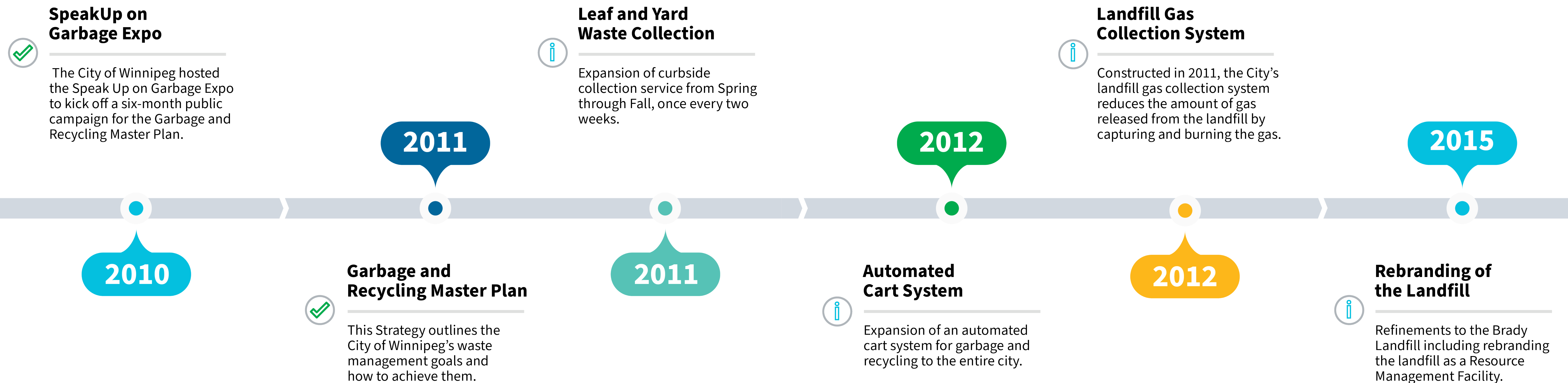
- A greater proportion of Winnipeggers are living in apartments and condos, which have unique obstacles for garbage and recycling.
- We need to explore new programs and services to reduce waste going to the landfill.
- We want to make sure our programs and services are meeting residents' needs.
- We want to build a circular economy in Winnipeg, where we repair, re-use, donate or recycle our items, only throwing them out when the item has no useful life left.
- We want to reduce the environmental impacts of the landfill through methane gas capture and leachate management.
- We need to update targets so they align with new City policies, such as those outlined in *OurWinnipeg 2045* and the *Climate Change Action Plan*.

An update will help us improve our targets, programs, and services for all customers.



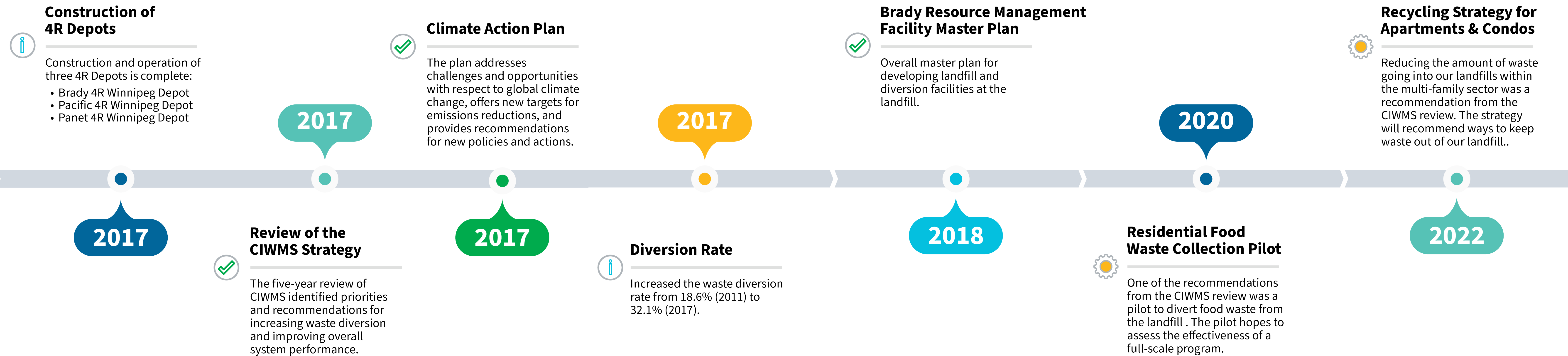
# Accomplishments

## Our waste-related progress





- Strategy / project is complete
- Strategy / project is in progress
- Waste programming updates





# Waste audits

## What we found

### Contamination:

Three audits were completed over summer and fall 2023, and winter 2024. The audits sampled waste from single-family dwellings, multi-family dwellings, and industrial, commercial, and institutional facilities.

We found that:



**16%** of the garbage could have been recycled.



**35%** of the garbage could have been composted, if a program existed.



**26%** of the recycling should have been placed in the garbage because it was not suitable for recycling.

### Common items contaminating recycling:



Packaged food



Yard waste



Pet waste



Drywall



Plastic bags



Textiles

### Single-family versus multi-family:

- Multi-unit properties tend to have more recycling in the garbage and more garbage in the recycling than single-family dwellings.
- Single-family dwellings tend to have more food waste in the garbage than multi-unit properties.

### Resources:

You can find out where items that can't be recycled should go with the Recyclepedia. Scan the QR code below or visit [winnipeg.ca/whatgoeswhere](https://winnipeg.ca/whatgoeswhere)

Many items that don't go in your recycling at home can be recycled for free at the 4R Winnipeg Depots. Visit [winnipeg.ca/4Rdepot](https://winnipeg.ca/4Rdepot) for accepted items.



Scan here



# What we heard

## How we gathered input



**5** virtual focus group sessions with **25** attendees




**6** phone call interviews



**10,600** unique project webpage visits



**632** online submissions to the ideas wall



**9,236** online survey respondents



**13** project email inquiries

## What you told us



**57%** said that keeping the City clean and tidy was their top priority



**33%** said that a main barrier to recycling is not knowing which items are accepted



**47%** want a recycling program for clothes and other fabrics in Winnipeg



**255 comments** Winnipeggers commented that more items should be accepted for recycling (i.e. black plastics, Styrofoam)



**57%** want a green cart program in Winnipeg








**51%** are concerned with smell, rodents, and pests if the City switched to collecting garbage every two weeks



# Overview of recommendations

Comprehensive Integrated Waste  
Management Strategy  
Phase 2 engagement

Theme	Description	Options
 <b>Increased diversion</b>	Programs to help residents keep more waste out of the landfill. These options will support a circular economy where we repair, re-use, or recycle our items, only throwing them out when the item has no useful life left.	<ul style="list-style-type: none"><li>• Improve communication and enforcement to keep waste out of landfills</li><li>• Create a construction, renovation, and demolition waste strategy</li><li>• Prepare for green cart program</li><li>• Expand items collected at 4R Depots</li></ul>
 <b>Increased participation</b>	Services that help improve participation in, and clarify expectations for, waste management and reduction. . These options will help more Winnipeggers reduce waste and keep the city clean.	<ul style="list-style-type: none"><li>• Explore ways to reduce waste management fees for low-income households</li><li>• Improve services and enforcement to stop illegal dumping and abandoned waste</li><li>• Consider updating bylaws to include waste management requirements for all properties</li><li>• Develop a fourth 4R depot to improve convenience</li></ul>
 <b>Improved planning</b>	Waste facilities and services are better considered in planning for the City. These options help the City plan for the future and make more informed decisions.	<ul style="list-style-type: none"><li>• Plan for extended producer responsibility (EPR), which means those that make and sell products are responsible for their recycling instead of the City</li><li>• Work with City's planning department to improve plans and policies related to solid waste</li><li>• Create a disaster debris management plan to prepare for climate change</li><li>• Improve data collection and use</li></ul>
 <b>Improved operations</b>	Review and ongoing assessment of the City's waste management facilities and operations is needed. These options will help ensure the City's waste management system is operating efficiently, making best use of resources and can adapt to change.	<ul style="list-style-type: none"><li>• Review Environment Act Licence and standards for the Brady Road Resource Management Facility</li><li>• Assess condition of City's closed landfills and identify potential for parks or other safe uses.</li></ul>
 <b>Improved reduction</b>	Reducing waste and reusing items are important for a circular economy. These options will help provide opportunities for Winnipeggers to use less, preserve natural resources, and minimize waste.	<ul style="list-style-type: none"><li>• Update the Corporate Waste Reduction Strategy</li><li>• Create a food waste reduction strategy</li></ul>



# Increased diversion

Recommendation	What this could look like for Winnipeg	Indicate support or other ideas
Improve communication and enforcement to keep waste of the landfill	<ul style="list-style-type: none"><li><b>Cart/bin inspections:</b> The City could monitor what is being thrown away in garbage and recycling carts. Residents would be notified of any unaccepted items found.</li><li><b>Contamination fines:</b> Residents that repeatedly place unaccepted items in garbage and/or recycling carts could be fined.</li><li><b>Education campaign:</b> The City could educate residents and businesses about what is accepted/not accepted in garbage, recycling, and yard waste.</li></ul>	<p>Place a <i>green dot</i> if you support, and a <i>red dot</i> if you do not support.</p> <p>Place a sticky for new ideas. If you like an idea, place a <i>green dot</i> on the sticky note.</p>
Create a construction, renovation, and demolition (CR&D) diversion strategy	<ul style="list-style-type: none"><li><b>Pilot program:</b> The City could pilot a program to recycle targeted CR&amp;D waste items at the Brady Road Resource Management Facility and/or a 4R Depot. Items may include lumber, shingles and/or drywall.</li></ul>	<p>Place a <i>green dot</i> if you support, and a <i>red dot</i> if you do not support.</p> <p>Place a sticky for new ideas. If you like an idea, place a <i>green dot</i> on the sticky note.</p>



# Increased diversion

Recommendation	What this could look like for Winnipeg	Indicate support or other ideas
Prepare for a green cart program, expected by 2030	<p><b>Food waste drop off at 4R Depots:</b> Before Winnipeg rolls out a green cart program in 2030, the City could offer food waste drop off at the three 4R Depots in the meantime.</p> <p><b>Food waste drop off at community sites:</b> Before Winnipeg rolls out a green cart program in 2030, the City could offer food waste drop off at community sites, like community gardens and community centres, in the meantime.</p> <p><b>Food waste drop off for apartments and condos:</b> Drop off sites could continue after the green cart program is rolled out to single-family houses in 2030 so residents in apartments and condos continue to have the opportunity to compost food waste until the green cart program is expanded to apartments and condos.</p>	<p>Place a <i>green dot</i> if you support, and a <i>red dot</i> if you do not support.</p> <p>Place a sticky for new ideas. If you like an idea, place a <i>green dot</i> on the sticky note.</p>
Expand items collected at 4R Depots	<p><b>Textile collection:</b> The City could work with textile recycling organizations to collect textiles like clothing, shoes, towels, and sheets, including those that are worn out, full of holes, stains, or grease.</p> <p><b>Reusable Items:</b> The City could work with local furniture banks to collect household items like furniture, housewares, and toys that could be reused.</p> <p><b>Household hazardous waste:</b> The City could work with producer responsibility organizations to identify additional hazardous items to collect.</p>	<p>Place a <i>green dot</i> if you support, and a <i>red dot</i> if you do not support.</p> <p>Place a sticky for new ideas. If you like an idea, place a <i>green dot</i> on the sticky note.</p>



# Improved operations

## Recommendation

## Why is this important?

**Prepare to shift recycling responsibility to Multi Material Stewardship Manitoba (MMSM)**

Extended producer responsibility (EPR) requires companies that make and sell products to be responsible for those products at the end of their life. This gives companies incentive to think about the environmental impacts when designing products. EPR results in less waste, more recycling, and less costs for cities.

Each municipality in Manitoba will need to work out the details of how MMSM will be involved with existing or new recycling programs in their community.



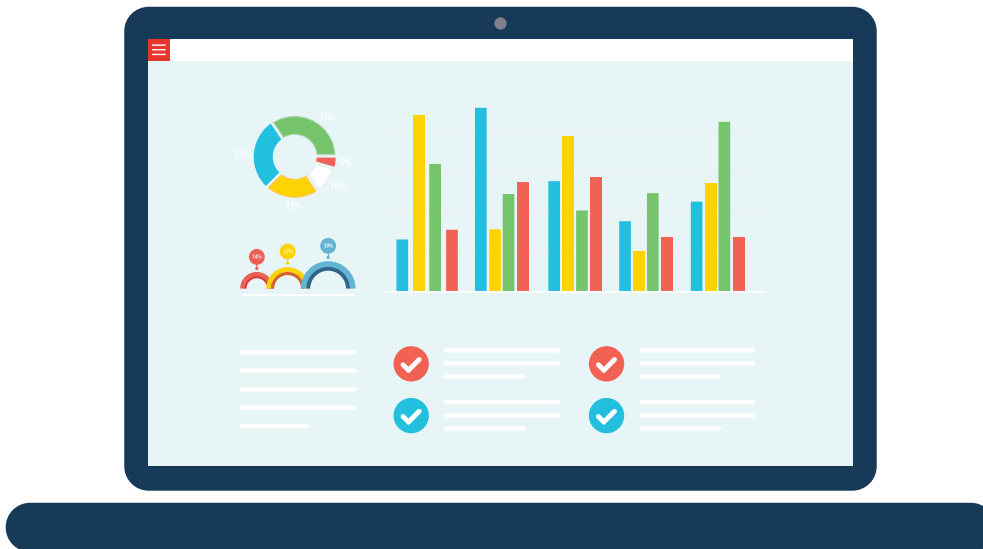
**Review Environment Act License and standards at Brady Road Resource Management Facility**

The review will keep the License up to date and might find better ways and less expensive ways to meet regulatory requirements at the Brady Road Resources Management Facility.



**Assess the condition and use of closed landfills**

Reviewing the City's 33 closed landfills would identify current conditions, potential environmental risks, and any rehabilitation needs. It also helps the City determine if closed sites can be used in beneficial ways, like parks.





# Improved planning

## Recommendation

## Why is this important?

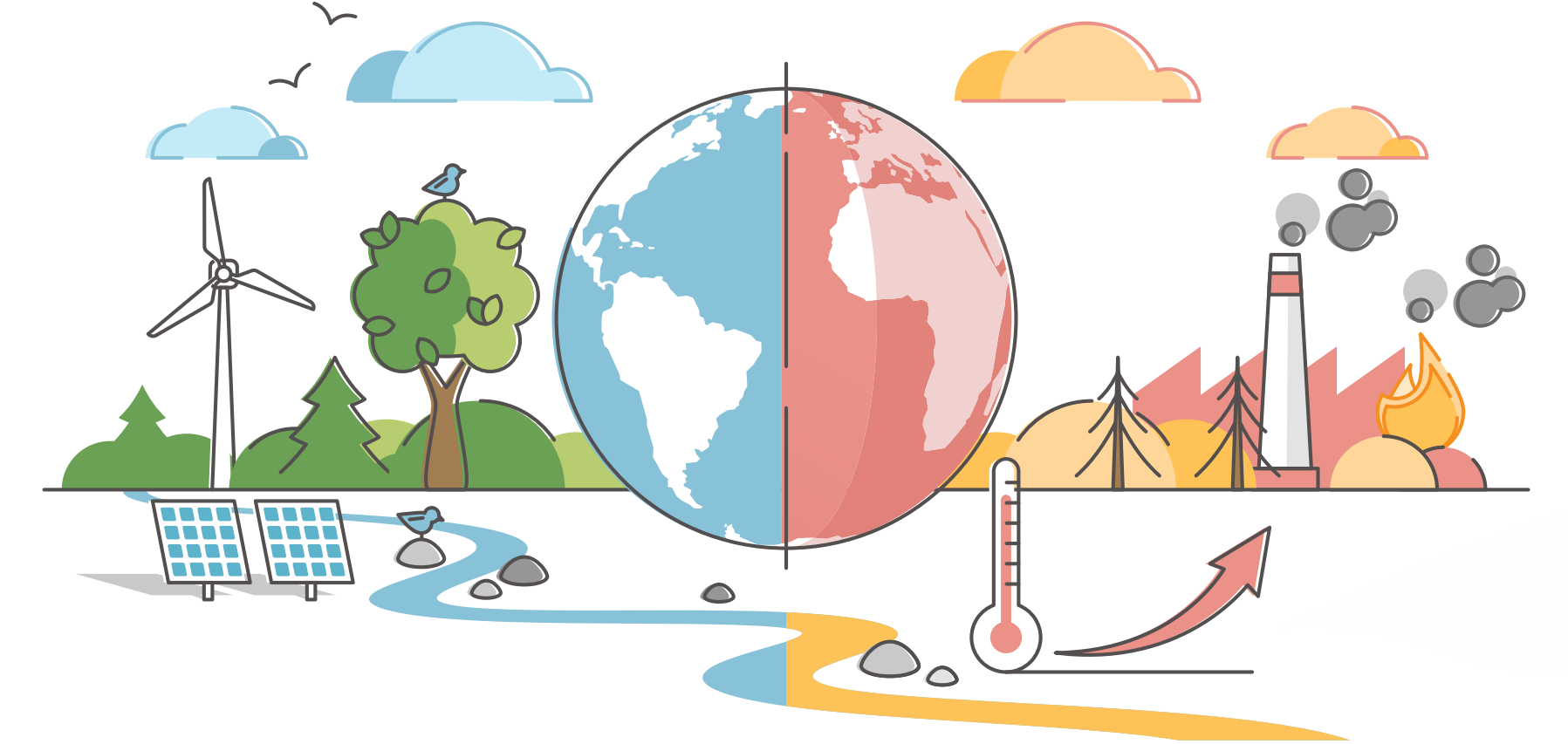
**Work with City's planning department to improve plans and policies related to solid waste**

This would provide more guidance for developers and decision makers to ensure that new development does not conflict with waste facilities and that new buildings are eligible to receive waste collection services from the City.



**Create a disaster debris management plan to prepare for climate change**

A disaster debris management plan would help us prepare for the effects of climate change. The plan would guide how the City handles waste in the event of a disaster. This includes tree debris after a storm, household garbage after a flood or tornado, and debris from a major fire.



**Collect additional data to inform decisions and measure results**

Collecting, measuring and reporting information about what we throw away, how we use existing waste facilities and services, and where we can improve bylaw compliance will support and improve the City's future decision making.





# Increased participation

## Recommendation

## Why is this important?

**Explore ways to reduce waste fees for low-income households**

During Phase 1 engagement we heard that fees for waste management are too high for some low-income households. The City could explore options to make waste services fees more equitable for lower income households, through financial support and/or relief.



**Improve services to stop illegal dumping and abandoned waste**

The City recognizes the unique waste issues in downtown/inner city neighbourhoods require a coordinated effort involving different City departments and community organizations. Illegal dumping and abandoned waste should be addressed as part of this coordinated effort, including enhancements to how abandoned waste is collected.





# Improved reduction

## Recommendation

## Why is this important?

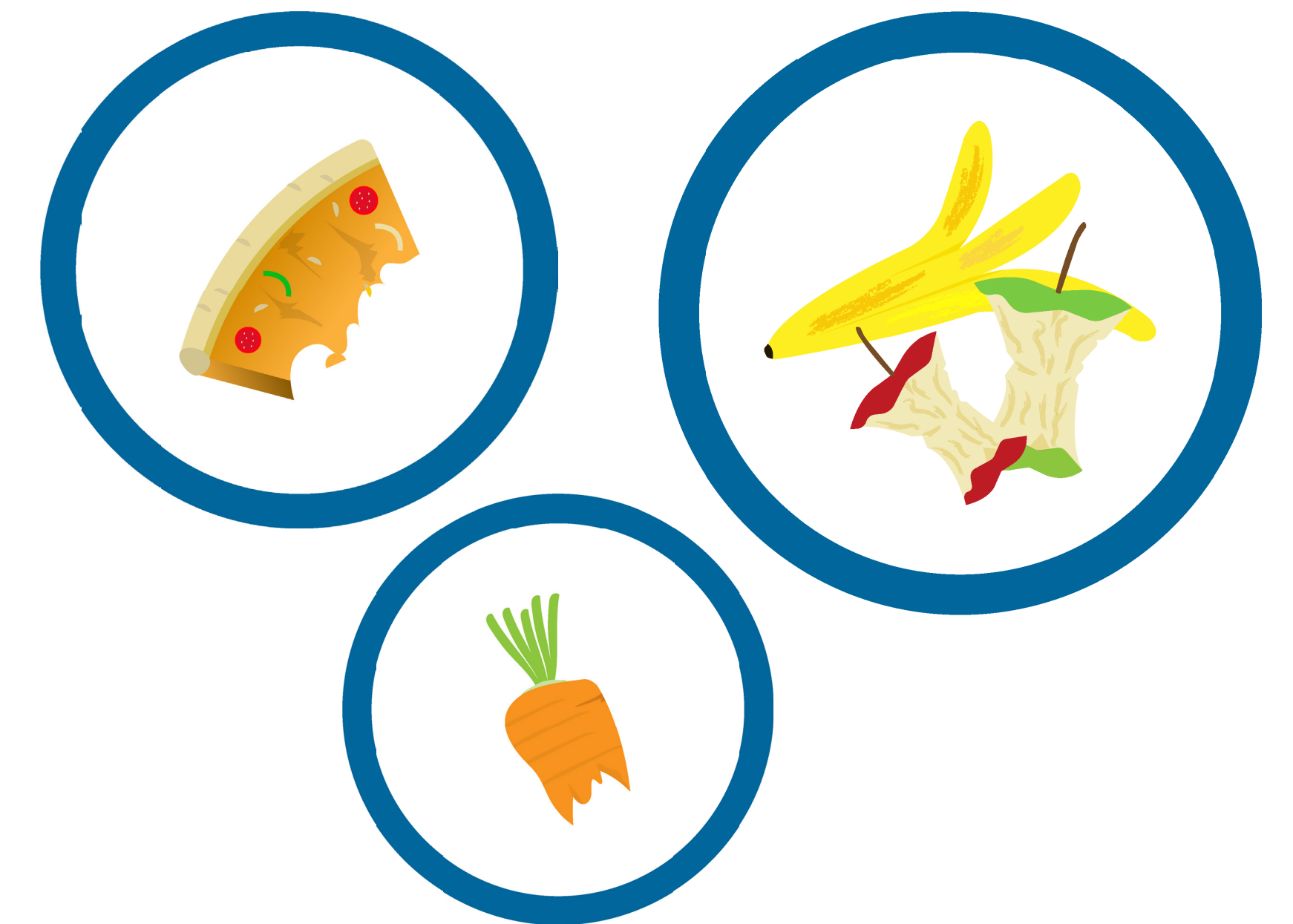
### Update the Corporate Waste Reduction Strategy

The City of Winnipeg Corporate Waste Reduction Strategy was last updated in 2014. The strategy looks at how waste is managed in City offices, recreation centers, libraries, and other City buildings. An update could address waste related to City operations, such as construction and procurement, to give a better understanding of the waste generated and opportunities to reduce or divert it.



### Create a food waste reduction strategy

Most of the food that ends up in the compost or in the garbage is avoidable food waste. A food waste strategy would help build awareness and prevent food from being wasted in the first place. In Canada, 63 percent of food thrown away could have been eaten, this is avoidable food waste. This strategy could focus on ways to reduce food waste in various sectors, such as food suppliers, retailers and consumers.





# Where we are

**Comprehensive Integrated Waste  
Management Strategy**  
*Phase 2 engagement*





# Stay engaged

## Contact us



wastestrategy@htfc.ca



(204) 986-4243



winnipeg.ca/wastestrategy

## Get involved



Fill out a survey and hand it in to a project team member or take the survey online by June 27, 2024 at **winnipeg.ca/wastestrategy**



Place dots on the boards to indicate your level of support for the draft options.

## Next steps

- Feedback received during Phase 2 engagement will help refine the updates and finalize the CIWMS.
- Council review of the updated CIWMS is planned fall 2024. The updated CIWMS will include a five-year implementation plan to guide actions to 2030, and longer.