

# What We Heard Report

---

Samuel Spicer Playground & Park

September 23, 2025

## Table of Contents

Executive Summary.....	<b>Error! Bookmark not defined.</b>
Methodology .....	4
Survey Questions & Key Insights.....	6
Appendices .....	15
Appendix A: What other suggestions do you have .....	15
Appendix B: Please leave any additional feedback, comments or thoughts.....	20
Appendix C: Park pictures (current).....	27
Appendix D: Advertising.....	28

## EXECUTIVE SUMMARY

Between July 9 and September 8, 2025, the Town of Cochrane invited community input through the *Let's Talk Cochrane* website by launching a short online survey called *Shaping Tomorrow's Parks*. The survey focused on gathering residents' perspectives on how to reimagine and improve the playground and green space at Samuel Spicer Park.

The need was to understand what the community wants. For example, build a larger playground to serve multiple communities, or plan a small neighborhood one. What age groups should we plan for, and should we plan only play structures, should we prioritize social gatherings. This engagement is more than just playgrounds; it is really about community park engagement and participation.

### Overall Engagement on Letstalkcochrane.ca

- **702 total visits** to the engagement site, with a peak of 75 in a single day.
- **600 participants** became aware of the project, with **361 informed** and **109 engaged** (18% of total visits).
- **109 community members contributed survey responses**, representing a strong and diverse cross-section of perspectives.

### Key Themes from Survey Feedback

- **Inclusive Use Across Ages:** Respondents emphasized the need for spaces serving toddlers (63%), children 5–12 (73%), teens (43%), parents/caregivers (46%), and intergenerational users (59%)
- **Accessibility Priorities:** Top-ranked features were *adaptive play equipment* and *mobility-friendly design*, followed by quiet/sensory-friendly spaces
- **Park Amenities:** Community members prioritized *playgrounds* and *open grass areas*, with strong support for seating, picnic benches, and covered gathering spaces. Features such as BBQ pits or message boards ranked lower
- **Lawn Activities:** Picnicking and casual recreation (bocce, 9-square, ping pong) ranked higher than formal sports courts or lawn bowling

- **Playground Equipment:** Swings and slides were the most desired, followed by natural play structures. Rotators, panels, or closed-circuit designs were less prioritized

## METHODOLOGY

Between July 9 and September 8, 2025, the Town of Cochrane engaged the community through the *Let's Talk Cochrane* platform with an online survey called *Shaping Tomorrow's Parks* to gather input on reimagining *Samuel Spicer Park*. This is the first of three planned park and playground engagements over the coming years.

### Engagement objectives

The purpose of this engagement was to gather community perspectives on priorities for this existing park and playground space, focusing on what mattered to them around inclusivity, accessibility, recreational needs, and amenity offerings. The input will inform concept design and ensure that future reflect resident values as best possible.

### The following factors were evaluated in choosing this playground space:

1. Available footprint in conjunction with budget – what space is available to install/replace play structures
2. Age-appropriate equipment – generally the 5-12 yrs range is targeted as being most widely usable (both in terms of range and functionality) but does require a larger footprint to be functional
3. Proximity of other playgrounds in the area
4. Options for other opportunities – adult based play options, enhanced green space amenities (seating etc.), nature and naturalized options
5. Demographics of the community – are the current spaces most suited to the entirety of the community

## Engagement approach

- Engagement tool: Online survey hosted on *Let's Talk Cochrane*.
- Participation: 702 site visits, 600 participants became aware, 361 informed, and 109 fully engaged by completing the survey.
- Accessibility: While the primary tool was digital, printed surveys were made available at municipal customer service counters to ensure participation was accessible to all residents.

## Marketing outreach

- Letstalkcochrane.ca: Live through the engagement period
  - Newsletter to registered participants (2 sends)
- Internal promotion: Shared via staff SharePoint
- Media release: Issued on July 9, 2025
- Municipal Matters: Included in the Cochrane Eagle in X publications
- Print advertising: Cochrane Eagle (¼ page ad)
- Social media: Organic posts, 1–3 per week throughout approximately
- On-site signage: Installed July 9 –September 8, 2025
- Bold sign board: One large-format sign near the site July 9 – September 8
- Printed copies: Surveys available upon request at customer service windows (The Station, The Cochrane RanchHouse)

## Accessibility & Inclusion

Efforts were made to ensure the engagement was inclusive:

- Mobile-friendly survey platform.
- Printed copies for those preferring or requiring paper.
- Clear signage at the park site to capture local users with QR code and web address.

## Limitations

While the survey captured valuable insights from 109 community members, participation was voluntary and self-selecting. As such, the results represent the perspectives of those who chose to engage and may not fully represent the views of all Cochrane residents. Online accessibility proved to be a challenge for some residents.

# SURVEY QUESTIONS AND KEY INSIGHTS

## 1. What age(s) should use this park space? Please select all that apply.

The community expressed a strong desire for the park to center on younger children and families as the most common priority groups, but there is also meaningful support for designing the park to accommodate teens and older adults.

Age Group	Count	% of Respondents*
Children 5–12	17	<b>15.6%</b>
Toddlers 1–4	16	<b>14.7%</b>
Intergenerational users	15	<b>13.8%</b>
Caregivers/Parents	11	10.1%
Teens	10	9.2%
Older Adults	9	8.3%

\*Note: Percentages overlap because respondents could choose more than one option.

**Key takeaway:** This reinforces the community’s call for an inclusive and multi-generational space across all ages.

## 2. If accessibility is important to you, which areas should be a priority?

The community placed equal importance on a range of inclusive features—with adaptive play equipment, mobility-friendly design, quiet/sensory-friendly spaces, and clear signage/wayfinding all ranking as top priorities, underscoring the strong desire for the park to be accessible to everyone.

Accessibility Priority	Count	% of Respondents*
Adaptive play equipment (swings, panels, etc.)	36	33%
A space that is mobility-friendly	36	33%
Quiet/sensory-friendly spaces	36	33%
Clear signage and wayfinding	36	33%
Other	36	33%

\*Note: Percentages overlap because respondents could choose more than one option.

**Key takeaway:** Accessibility was widely recognized as essential, with a near-equal prioritization across equipment, physical mobility, sensory inclusion, and wayfinding.

**3. What is important to you in a park, playground space? Please rank in order of priority – 1 is the most important.**

Residents highlighted the need for playgrounds, open grass areas, seating, and picnic spaces as top priorities, with covered gathering areas also valued, while features like BBQ pits and message boards were seen as less essential.

<b>Park &amp; Playground Feature</b>	<b>Avg. Rank</b>	<b>Preference Share (%)</b>
Playground	<b>2.76</b>	<b>18.0%</b>
Open grass area	3.99	12.5%
Park seating benches	4.33	11.5%
Picnic benches	4.60	10.8%
Covered gathering spaces/areas	4.77	10.4%
Lawn activities	5.61	8.9%
Animal clean-up bags & hitch-up posts	6.10	8.2%
BBQ pit/area	6.77	7.3%
Community message board	7.94	6.3%
Other	8.13	6.1%

**Key takeaway:** The community prioritizes play spaces and open, flexible green areas that encourage play and gathering, while functional amenities like BBQ pits or message boards are appreciated but less critical.



**4. What lawn activities are important to you? Please rank in order of priority – 1 is the most important.**

Residents showed the strongest preference for picnic areas and casual recreational games (like bocce, 9-square, and ping pong), with some interest in court surfaces, lawn bowling, and horseshoes, while “Other” and “None” ranked lowest.

<b>Lawn Activity</b>	<b>Avg. Rank</b>	<b>Preference Share (%)</b>
Picnic area	<b>2.56</b>	<b>26%</b>
Recreational games (bocce, 9-square, etc.)	3.32	19%
Court surface (basketball, tennis, rink)	3.84	16%
Lawn bowling	4.10	15%
Horseshoes	4.14	15%
Other	4.80	11%
None	5.24	10%

**Key takeaway:** The community prefers picnicking and informal games as primary lawn activities, while sports courts and traditional games like lawn bowling or horseshoes were considered less critical, though still of interest to some.

## 5. What types of playground equipment would you like to see? (Rank in order of preference)

The survey results show a strong preference for traditional play equipment such as swings and slides, followed by natural play structures, whereas items like rotators, panels, and closed-circuit designs were less favored by participants.

Playground Equipment	Avg. Rank	Preference Share (%)
Swings	3.13	15.8%
Slides	3.62	13.7%
Natural play climbing structures (logs, rocks...)	3.64	13.6%
Climbers	4.62	10.7%
Balance & agility equipment	4.68	10.6%
Spinners & rotators	6.05	8.2%
Closed circuit design	6.23	7.9%
Play panel	6.35	7.8%
Other	8.19	6.0%
None	8.49	5.8%

**Key takeaway:** Traditional and active play features are most desired, while stationary or less interactive elements were ranked lower

## **6. What other suggestions do you have to improve the Samuel Spicer Park area, if any?**

Community suggestions focused on preserving the park's natural character while adding thoughtful improvements. Many emphasized keeping the existing green space, trees, and swings, while enhancing usability with covered picnic tables, more benches, and better lawn maintenance. Some requested parking improvements to accommodate visitors, while others felt the park was already a "gem" and should not be significantly altered.

### **Key Themes from Open Responses:**

- **Preserve existing features:** Keep the large green space, trees, and especially the long-chain swings.
- **Add small-scale amenities:** Covered picnic tables, more benches, and additional seating for all ages.
- **Maintenance needs:** Requests to keep the lawn mowed, manage weeds, and refresh play structures.
- **Parking:** Suggestions for a small parking area to improve accessibility.
- **Maintain character:** Several residents expressed that the park should remain peaceful and not be overdeveloped, with some strongly opposed to upgrades.
- **Nature-based play:** Interest in natural playground elements like logs and rocks.

**7. What is your favourite community playground in Cochrane? Please rank in order of preference – 1 is the most important.**

While Heartland, East End (Mountain Street), and Sunset Ridge were the top choices, many other playgrounds such as West Terrace, Bowridge, Riversong, Fireside, Riverview, East End (Carolina Drive), and Heritage Hills also received meaningful support, showing residents value playgrounds across multiple neighbourhoods, with only a small share selecting “Other” or “None”.

<b>Playground</b>	<b>Avg. Rank</b>	<b>Preference Share (%)</b>
Heartland – 46 Appaloosa Gardens	<b>5.36</b>	<b>9.8%</b>
East End – 333 Mountain Street	5.48	9.6%
Sunset Ridge – 5 Sunvalley Road	5.52	9.5%
West Terrace – 87 West McDougall Road	5.66	9.3%
Bowridge – 301M George Fox Trail	6.34	8.3%
Riversong – 24 Willow Green Way	6.36	8.3%
Fireside – 59 Emberside Green	6.47	8.1%
Riverview – 144 Riverview Circle	6.49	8.1%
East End – 34 Carolina Drive	6.64	7.9%
Heritage Hills – 79 Heritage Boulevard	6.70	7.9%
Other	7.66	6.9%
None	8.32	6.3%

**Key takeaway:** Residents value their *local, accessible playgrounds*. Popular playgrounds combine quality equipment with neighbourhood integration: safe, walkable, scenic, and family-focused.

## 8. What other suggestions do you have to improve Samuel Spicer Park, if any?

Residents most often suggested preserving the park's natural character—keeping the large green space, trees, and long swings—while adding small-scale improvements such as covered picnic tables, benches, and better lawn maintenance. Some requested parking and signage upgrades, and a few opposed major redevelopments, emphasizing that Samuel Spicer is already a valued, peaceful community space. Interest was also expressed in nature-based play features and amenities that support both children and older adults. The community wants enhancements that improve comfort and accessibility but avoid overdevelopment, with a strong emphasis on retaining the park's existing open space and character.

### Key Themes from Open Responses:

- **Preserve natural character**
  - Many residents emphasized keeping the **large green space, mature trees, and existing bushes**.
  - Strong attachment to the **long-chain swings**, with multiple comments urging the Town not to remove them.
- **Small-scale comfort improvements**
  - Requests for **more benches, shaded seating, covered picnic tables, and pergolas**.
  - Desire for **better lawn care** (regular mowing, weed control, and improved grass quality).
- **Accessibility & parking**
  - Suggestions for **small parking areas** with time limits to reduce congestion from nearby businesses.
  - Calls for **clearer signage**, especially regarding **no dogs on playgrounds and sports fields**.
- **Noise & peaceful environment**
  - Some residents stressed keeping the park **quiet and family-friendly**, with opposition to loud facilities such as **pickleball courts**.

- **Nature-based and diverse play**
  - Interest in **natural playground features** (logs, rocks, gliders, climbing structures).
  - Ideas for including activities that also cater to **teens and seniors**, such as adult fitness equipment.
- **Skepticism about redevelopment**
  - Several respondents questioned the **need for upgrades**, arguing Samuel Spicer Park is already a “gem” and that **other parks in Cochrane need investment more urgently**.
  - Some expressed dissatisfaction with the **survey design**, feeling it limited open feedback.

## APPENDICES

### Appendix A: What other suggestions do you have to improve Samuel Spicer Park area, if any? (text responses)

- Covered picnic tables would be a great community investment. BBQ with bears in the area might be a hot mess
- Leave the large green space, bushes and trees. Add more seating around the playground area. Plant some trees along the fence backing onto Bethany Care.
- Most importantly leave the large green space.
- The big swings in this park are the only large swings in town and are great for parents and grandparents to swing with the little ones. So please do not remove them.
- Keep the lawn mowed and free of weeds. The park has not been upkept for the last couple of years. If Town of Cochrane is going to have parks they should be made to keep them tidied.
- The space is great as it is. Just needs newer park equipment! Please keep the swings though. They are some of the only high swings left in town. Kids need to be able to swing high for their vestibular input. All these small swings around town are just sad.
- DO NOT TAKE OUT THE SWINGS! Those swings are the best in the town. I see kids from littles to adults on those going as high as they can. I have seen teens drive & park just for those swings!
- I hope you leave the green space as is but redo the grass. As is it gets used a lot by everyone but the space is quite uneven, the grass gets quite hard and crunchy and lots of weeds. Please, do not touch the trees
- Keep the long chained swings! They are the best swings in town. No gravel for the base of the playground.
- Samuel Spicer Park DOES NOT need upgrading at this current time. Yes it would be nice if it was more accessible, but of all the parks in the area, this one should NOT be priority.
- The little park with just swings and a digging toy off West hall Place is a park in need of serious upgrading and redoing with some actual play ground activities. Focus on that park. Not Samuel Spicer.

- More benches. Keep it peaceful for older residents nearby and the deer. Updated swings and other equipment. Please no pickleball or other noisy things.
- Place for 4-5 cars to park. Right now a small business vehicles are taking up most of the parking in front of the park. This should not be allowed.
- A natural playground with logs and rock would be a nice and new feature in cochrane, the current playground structure works well but needs a renovation. Making a good use of the field into a sports (banquet all, hockey rink, other) area would be great!
- More adult activities, it's beside a seniors Homs, and west valley has a lot of older adults.
- While the natural play climbing structures are cool, the park by the bridge demonstrated that they are really best just as climbing structures and trying to make one a slide didn't work very well.
- Big shady trees or a shade sail. Lots a native bushes and shrubs, propane bbqs and picnic seating under a pergola.
- Please don't remove the swings!!! And don't put in those giant disc swings instead.
- All the parks in Cochrane are losing their regular swings and they are the best part of parks.
- Designate some parking spots on the west side of West McManus Road for park users only. Enforce a 2 hour limit, and clearly state 'No Overnight Parking!'
- NO PICKLEBALL COURTS.....much too noisy for residential area!
- Please keep the swings and improve the slides
- Family friendly gathering area
- There are super long glider sets available- would be amazing! Keep long swings!
- Also SIGNAGE for NO DOGS ON PLAYGROUNDS is desperately needed! Who is negligent in not doing this? Signs saying dogs on leash means irresponsible dog owners bring their dogs into playgrounds-it's long overdue to be dealt with. Please fix it already! 10 years of asking for this and it is only getting worse. Every playground I Cochrane need strong clear signage about this. "No dogs in playgrounds fine 250\$" or dogs banned from playgrounds and sports fields. We have the worst irresponsible dog owners in Cochrane ever- and they threaten/swear/insult you if you ask them to remove their dog.



- keep open space
- I'd love for a beach volleyball court to be built in cochrane somewhere. Samuel Spicer park area would be a great place to build one, as there's a large green space next to the playground, and it's centrally located within town.
- Focusing on natural playground pieces like a tree deck, log balancing, bridges etc
- Outdoor gym
- I have no idea where that is 😊 been here 33yrs so I'm imagining it's ne
- Plenty of vegetation and tree cover for natural play and shade.
- Washrooms, shaded areas and benches please.
- I think it should stay as is. Don't put bbq pits or fire pits it's an absolute nightmare for neighbours
- A wading pool! our current splash park is already too small and limited to who it serves. And outdoor wading pool would be great for this side of town and for all ages to enjoy!
- Make multiple areas. Don't put all the picnic tables together in the same spot. People like to spread out and have their spaces. Fix the grading issue from the street. Make sure bocce ball grass area isn't next to the playground and that it has benches on both sides of it.
- Do not remove the swings
- I would like to see something geared toward older youth as well as a community gathering space
- Our grandsons mentioned they would love a treehouse style play area and a water splash park
- Shade for visitors to the park.
- Beach volleyball courts are needed in Cochrane. Samuel Spicer park would be ideal for a couple of courts
- limit dog use as parks are often for very young children and unfortunately, some dog owners aren't respectful of the surfaces. Plan for ease of future changes based on usage and technology.
- Add some trees. Pita-potties. Do not allow large gatherings (more than 7 people in one group), portable speakers or open cooking.
- Lots of play options for kids of various ages
- Build multiple structures for different age groups, picnic benches. We travelled in Europe and their playgrounds are mostly build out of Trespa (very climate

resistant and aesthetically appealing). It was a real gathering space for children and communities.

- Set up Designated and permanently marked Bocce courts (3) where we can hold proper tournaments and games on a weekly basis! Seniors deserve places to congregate with easy access to areas where they can be social and active and without paying fees to play.
- There is an active group that uses the area for bocce. They need an area that is maintained and mowed on a regular basis. some benches or tables in the shade of the trees would be a nice addition. We do not wish to have noisy courts especially pickle ball! This is one of the few parks in cochrane with the tall swings. I think these need to be kept.
- keep a natural area for the deer that are always there.
- Area for Tia Chi and NO pickleball.
- In-ground trampolines, ziplines, splash park, outdoor pool
- Small urban forest area with a tree house
- low rope walk
- a small hill
- Ninja parkour obstacle course, or similar park to harmony. Pleases kids of all ages
- Senior-friendly exercise equipment and shade areas to promote their attendance to the park. Addition of some large rocks for kids to climb on.
- Keep it simple. It is a nice quiet park enjoyed by all generations of residents, and it is nice that it is natural enough that we see deer and fawns there every year.
- Leave it wide open and let everyone play as they are, it's been beautiful for years and should be left to allow dear and kids and older adults to use as an open space.
- Keeping the swing possibly making them bigger. there are the best in town and as a teen how frequently use it often I would love to keep then. Also adding a outdoor rink (winter) basketball court (summer) there are many basketball and hockey kids and teens in this side of town
- I believe parks need to fulfill the needs of a multi generational population. Bethany borders on the park and should be a place where their residents can enjoy and be active to their abilities.
- Make the base / ground the squishy mat rather than rocks or woods chips.
- That the ground is accessible. not just the play area.

- A small dog park which is fenced in would be nice
- In ground trampolines, enclosed zip line, seating area for picnics & parents, rentable gazebos for parties/events.
- both paved and gravel walk ways
- Keep it simple, inexpensive, uncomplicated. If you feel the urge to spend big dollars, put in a bathroom. But otherwise, maybe put up a couple picnic tables and a simple roof over a few of them, like at Riverfront Park.
- make the park bigger and make it unique to itself
- The park at 201 Elgin Estates Park SE, Calgary, AB T2Z 0N6 in Calgary has a very good design.
- Wading pool and indoor activity centre with craft times, games, etc.
- Give us some playgrounds with bathrooms and covered over (i.e. shady) picnic tables. Why are there never any bathrooms at the park? At a certain age it isn't appropriate for kids to pee in the grass. And surely the town would prefer kids didn't do that anyway. I come from Australia and these two features are standard at every single playground I have ever been to there.
- Please leave the amazing swings and swing set that is already there. The long chains are great for parents pushing kids and also for kids getting the most out their swing and pump.
- Spraypark would be a cool idea
- Kid friendly or adjustable basketball nets
- Soccer nets
- Please trim the bushes/trees up off the ground.

## **Appendix B: Please leave any additional feedback, comments or thoughts. (text responses)**

- Please stop installing these little 0 to 5 plastic parks that aren't utilized often. I live beside one on the pathway to Bethany from mitford ponds and such a small selected age range can use it it is virtually useless.
- In older established neighborhoods, the parks are an important part of the community. The trees are well established and integral to the overall enjoyment of the park and the neighborhood in general. Adding more trees would be prudent before the older trees need replacing.
- The parks that were put in place years ago are not being mowed, weeds controlled or being looked after. Have lived in Cochrane for over 35
- Years and every year it is getting worse. Stop building park areas if there are not enough man power to look after them. Most of them are terrible now. So disappointing.
- I'd also like to add that of all the parks that need updating in west valley/Terrace.... Why this one? Next to the sheriff park... It has some of the best play equipment compared to some of the parks down towards the end of Quigley Drive. I think its a waste of time updating this already beautiful space when there are other parks in this neighbourhood that desperately need updating! Especially west tower playground and the one along Quigley Drive and west Terrace crescent. As well as the one in the green space at the end of Quigley Drive. Please reconsider updating one of these playgrounds before Samuel spicer!
- Samuel Spicer park is a gem. I see senior lawn bowlers, kids & adults practicing soccer, baseball, golf and summer camps. Do not take away the green space & pave over it. The trees are amazing! I have seen teens & adults practicing tight rope between the trees, kids raking up the leaves to jump in. The berry bushes have been picked every year but some residents for pies or jams. Leave the trees & bushes but maybe trim them back a bit.
- this survey is silly. It asks me to rank the most important parks & forces me to choose them when I don't even know them. The only parks I can actually share my opinion on are ranked 1, 2, and 3 plus Samuel Spicer park.
- Samuel Spicer Park DOES NOT need upgrading at this current time. Yes it would be nice if it was more accessible, but of all the parks in the area, this one should NOT be priority.

- The little park with just swings and a digging toy off West hall Place is a park in need of serious upgrading and redoing with some actual play ground activities. Focus on that park. Not Samuel Spicer.
- Also surveys like this are really one sided and not actually well done. How about just asking for people's opinions in a text box vs having them rating things in order of importance. It "guides" the survey rather than allowing people to say what they really would like to see.
- Please note: I don't know a lot of these parks so it's difficult to rank them and is not reflective of preference at all. Cochrane does have a good amount of playground parks for younger kids. I appreciate Samuel Spicer for the peace and quiet, especially considering nearby residents. Maybe there could be a walking path from Bethany to the park with benches to stop and rest. I love the trees and grass space and the deers who use the park. Please don't ruin it.
- Total public access to all parks should be a priority. At Samuel Spicer there are multiple same business vehicles and trailers blocking access to get to the park. This should be a bylaw and not allowed.
- With a growing population of young families and the epidemic of screens use in children, Cochrane need more and better quality outdoor spaces to invite families in safe places that children can explore all year round
- Please leave it a natural gathering place for adults to enjoy.
- Would love an outdoor fitness park somewhere too for adults! Maybe in the green space of William Camden park?
- Please focus on including nature and not disrupting wildlife.
- I'm only here to advocate to keep the swings! Please!!!
- Samuel Spicer park nor Riverview Drive (west end) are not listed above. These two would be my favourites!
- The park by the river with the disc golf course and family inviting facilities is what we should aim for. Parks with specific features like the tobogan hill, Mitford ponds, accessibility, ponds, sport fields, make them desirable places for more people in town to visit
- Lots of different features- but long swings, super long gliders would be great. Places with shade to picnic. The pump track in Fireside is great. Include stuff for littles and lots of climbing for bigger kids. Again sign all playgrounds "dogs banned from playgrounds" or strong language to clearly educate that dogs are never allowed in playgrounds or sports fields. Constant issue in Cochrane! They should also be banned from school grounds- they are playgrounds and

sports fields too! Not dog toilets. Ugh. Please fix this issue for once- dog owners rip down the stickers on playgrounds so a sign on the posts already there would be better and remove excuses for the abuse.

- As seniors, we enjoy seeing children playing in the parks on the play structures and in the wide open spaces. The well maintained seating benches are well used and appreciated. We appreciate the hard work of town staff in parks.
- I think the best playgrounds are those that are large, and have other amenities surrounding the playground, such as basketball courts, green spaces, soccer fields. These spaces best foster community spirit and create a lively community. For example, the park in sunset is surrounded by the pond and a walking path, create a multi-use space for kids and an assortment of individuals on the pathway (joggers, dog walkers, cyclers, etc)
- All are important.
- Riverfront isn't listed but is ranked in our top 3.
- What about William Camden Park and playground?
- You should include all playgrounds.
- Shade, natural spaces, and natural materials!
- At the East End Quigley Park tennis courts, there needs to be a crosswalk. Or at least a speed bump, or radar speed sign - there are always people speeding through this section and it is a very well used crossing spot.
- We would love for this space to be great for intergenerational visits as many grandparents live in the building next to the park. Lots of seating and some shaded covered areas would be nice. And please please please include washrooms.
- These survey results will be inaccurate because you have to choose a ranking and cannot just choose none as an input. Having to rank all the options doesn't make sense.
- - I truly think an outdoor space, whether it be a wading pool or an outdoor skating rink would be an awesome addition to this park space. The west end deserves some activity space that is accessible and walkable or an easy bike ride for residents rather than having to drive to every other part of town for something to do.
- Keep it simple. Don't buy a \$200000 mobility friendly swing that never gets used. It should be useable by old people and families with kids.

- The best parks are the Sam Spicer the Cowboy Park on West Macdougall and the Spider Park inside the nature reserve by the tennis courts in Glenbow and the one on Mountain Street
- the final question asking residents to rank all the parks in our community. This question is challenging for many to answer accurately, as it provides little context or information about the parks themselves.
- Additionally, not all families have the means or opportunity to visit every park, especially if they are located outside of their immediate area. Requiring a ranking without the option to opt out may unintentionally send the message that the opinions of those who haven't visited every park are less valid or welcome.
- To ensure all voices in our community are heard and respected, I would suggest including an option to skip or select "Not familiar with this park" in future surveys. This small change could make a meaningful difference in inclusivity and the quality of the data collected.
- Samuel Spicer is a large area with lots of wildlife. Keeping a green space but having family activities year round would be a great use of space.- More shade for seniors and more benches on key vantage points. There's already enough children's play areas.
- We need more basketball courts, rinks, outdoor game spaces in Sunset.
- good approach to feedback, although I think maybe the use of visuals would be helpful – for example, innovative play structures, flex spaces, etc.
- Seasonal or permanent washroom facilities should be at most or all park locations. We notice more and more people defecating in public nowadays. It's becoming a real problem.
- my favorite playground is the new greystone playground which is not on the list
- I believe Seniors contribute many hours of volunteer work in the community and we deserve to have designated areas to socialize and play sports at no charge. We pay our taxes inc. school taxes so we should be recognized for our contributions.
- No pickle ball !!!!!!!
- It is hard to rank playgrounds as I have not seen many nor do I have children.
- Hard to rate a park when you don't live near it or have kids that play there.

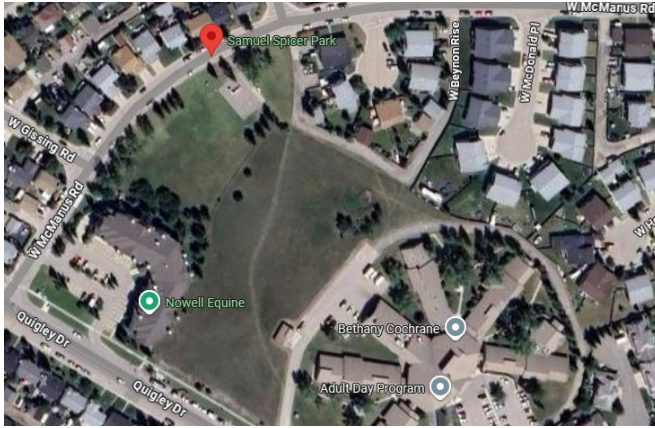
- Please do NOT include a pickleball court. An area for the seniors to play bocce / lawn bowling etc would be highly utilized.
- I do not use playgrounds. N/A should be. Choice.
- Need more swings!! And shade partitions in the park when there are no large trees. Look up what Texas has in their playgrounds. 342 Ross ave/333 Mountain ave is the best park. Lots of variety kids are happy here for a long time and all ages. The new park near the SIs on Park Street is also nice. Would love to see a bigger park in Riversong area 😊
- My favourite playground is awesome and located in Parksville, BC
- Harmony playground is favourite, they like the playing floor is lava tag these days.
- Our favourite playgrounds have a mix of trees and natural areas to play as well as playground equipment. The swings are always popular – I would vote to leave the swings as they are at this particular park.
- Only that we haven't been to them.
- Jumping Pound park needs an over haul. It is unsafe
- Again, please don't consider major changes to this park. No tennis or pickleball courts – keep it natural grass. It's nice to see seniors out lawn bowling, and kids in the playground.
- Adding an outdoor rink to this side of town would be amazing I know many hockey players and skaters here
- It's always nice to have playground with structure for bug kids and little bugs. It's versatile and offers motivation for little ones, or easy stuff for bigger kids.
- I suggest that planners ensure the park is fully accessible for both children and parents with mobility concerns. This means designing wide, smooth pathways with firm surfaces and gentle ramps, ensuring entrances and parking are barrier-free, and incorporating inclusive play equipment such as ground-level features, ramps, and adaptive swings. Seating and rest areas should include accessible benches, shaded spaces, and picnic tables with wheelchair clearance. If washrooms are considered they should be accessible and family-friendly, with change tables. Clear signage, good lighting, and fencing with accessible gates will improve safety and navigation. Most importantly, the design should allow parents with mobility challenges to actively participate and supervise their children, with quiet areas, gathering spaces, and consistent maintenance to keep the park safe and usable year-round.



- - If I recall the park correctly, there is a swing for a wheelchair, but it is a royal pain to use it because we had to go to the ranch house to get the key. The client I was with at the time would only like to swing for about 10 minutes the only equipment she could access we would have to spend more time gaining access to the swing then actually using it.
- Well for the question above regarding favorite park obviously close in proximity to my home. Riverview Circle, Baseball diamond and Soccer Field and upgraded playground is nice, The new Greystone is fabulous.
- This survey could have been much easier to complete, you don't put other in select all that apply unless a box to respond is attached. The size of the playground, the diversity for play including the ability for grandparents too join in on play and the surface are important.
- We need outdoor washrooms and we need also somewhere to sit in the shade or a pergola
- I think you should consider only the top 2 or 3 choices in question 7 because most people do not know all of the park spaces. The choices after #3 are all guesses because one MUST make a choice.
- I don't really use playgrounds, and my ranking is random, but space to gather with family would be nice. especially with fire pits and picnic tables
- It would be great to see more seating areas for parents at all playgrounds. Our favourite park of all time is the large structure in Bragg Creek. It would be wonderful to see something similar in town.
- As a senior I feel we need play structures where ever we have young people. Cochrane is a great place to raise a family with the number of accessible play grounds. Young children need more outdoor play time than screen time.
- This survey would be far easier if each of the numbered options were rankable from 1-5, or 1-10 or something. And for the playgrounds, having a photo of each would help jog memory. I'm a local and it's still hard to picture each one ... and was the Glenpatrick one by the creek missing in the list?
- just add more stuff like you did with the one by the new pickle ball courts
- Consider the location of the playground that has been chosen in West Valley - Samuel Spicer is RIGHT BESIDE the newest renovated park within West Valley (West McDougall). What's the reason for polarizing all of the updated parks on the east side of West Valley? And no, Henry Whitfield Park was not recently updated - the crude expression "lipstick on a pig" would describe that park.

- There are lots of other rundown and dated parks within the West Valley and West Terrace districts that could be updated. Perhaps choosing a more centrally located one would serve the district better.
- Make the parks different so people will move around to each of them. Variety. One could be devoted to downhill overhead trams as a feature. One could be devoted to building projects with wood or whatever. You dream it, they will come! Shade would be very nice.
- As noted, the parks in town need bathrooms and they need covered picnic tables for shade/shelter.
- The 'deer park' aka Samuel spicer is our go-to park. Lots of space to run around and kick the soccer ball and the best swings in town!

## Appendix C: Park pictures (current)





## Appendix D: Advertising

