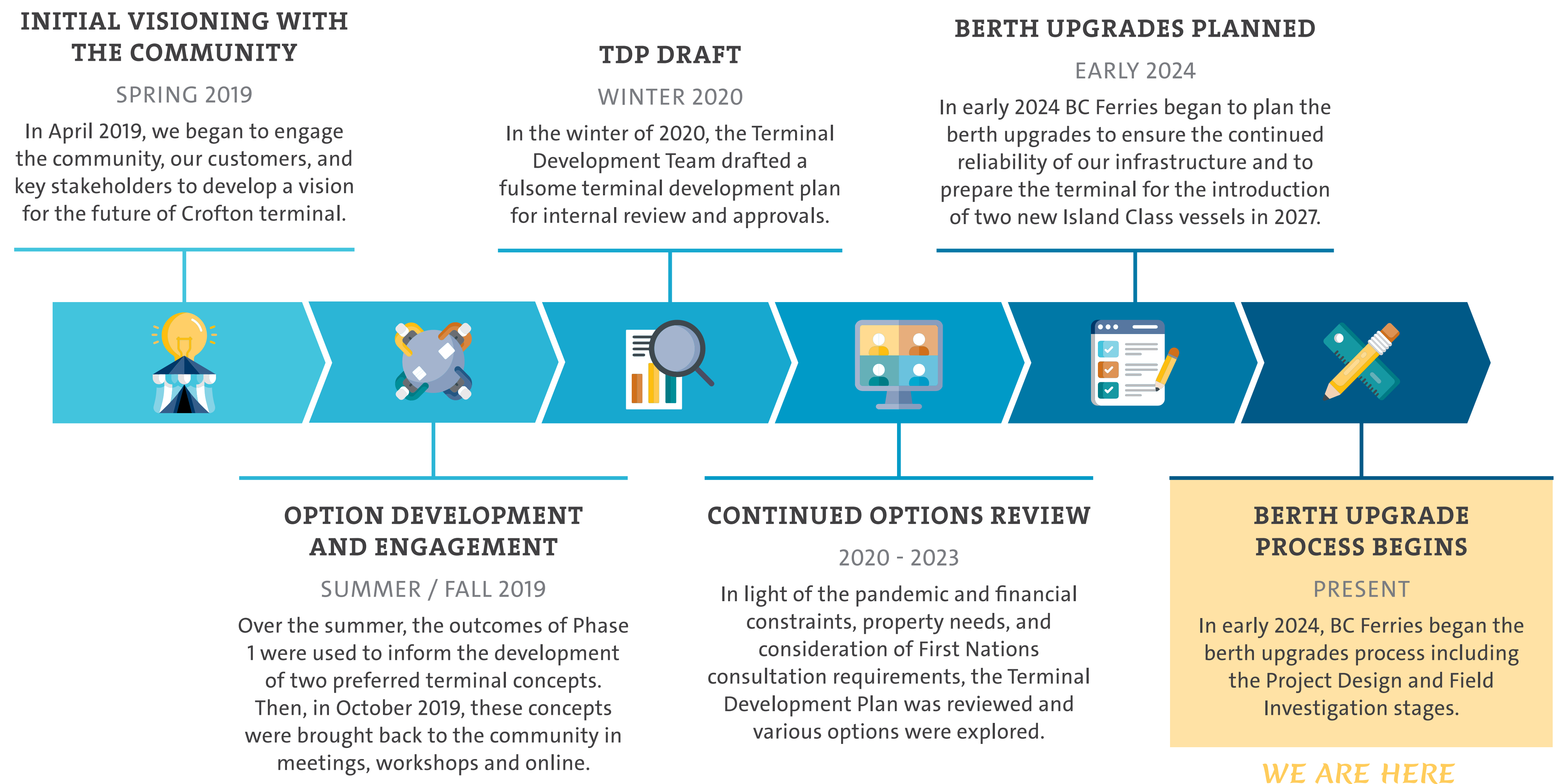


# 1. What is happening at Crofton Terminal?

To maintain safe and reliable infrastructure, and to prepare for the entry of two-ship service with the Island Class, BC Ferries will be upgrading the berth in its existing location in the near term. Due to capital budget constraints, work on holding areas, and other upland terminal work has been deferred to a future phase.

This work is informed by our Terminal Development Plan (TDP), which is a long-term plan and vision for the terminal. We engaged with the community of Crofton, our customers and key stakeholders to help inform the development plan.

An overview of the process from 2019 to present is outlined to the right.





## 2. What is planned **NOW** and the **FUTURE**?

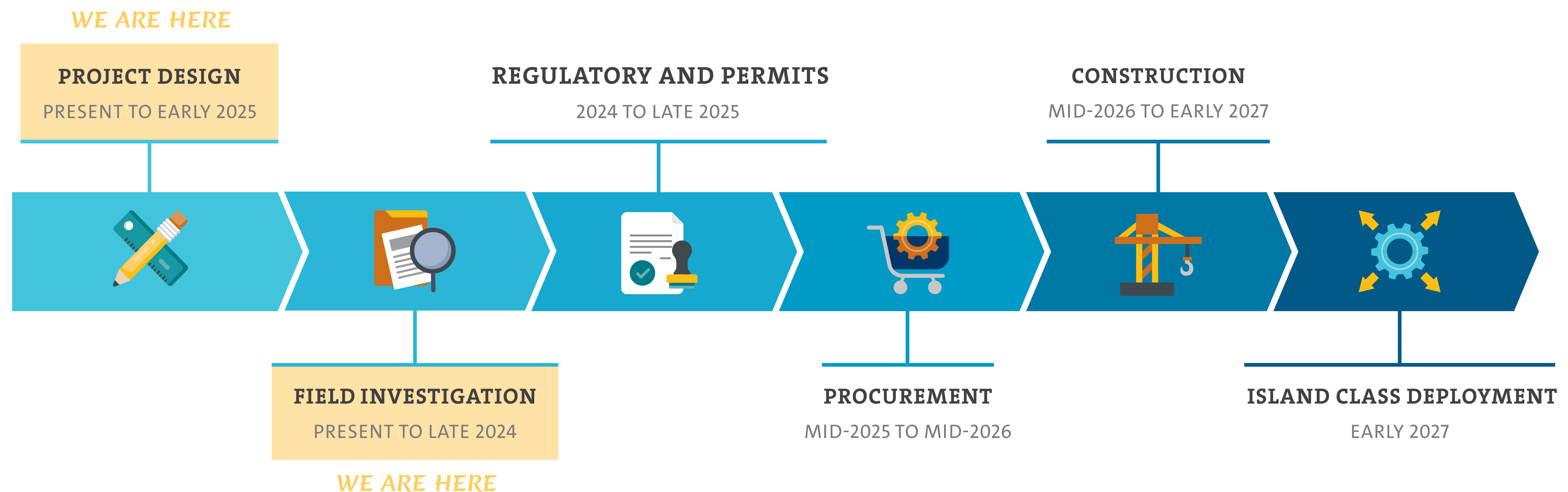
BC Ferries is planning to proceed with **berth upgrades** at the Crofton terminal beginning in 2026 before **future terminal** upgrades. The berth upgrades are required to ensure the continued reliability of our infrastructure and to prepare the terminal for the introduction of two Island Class vessels in 2027.





### 3. What is the timeline for the berth upgrades?

BC Ferries is currently at the **Project Design** and **Field Investigation** stages and will be deploying the Island Class ferries in early 2027.



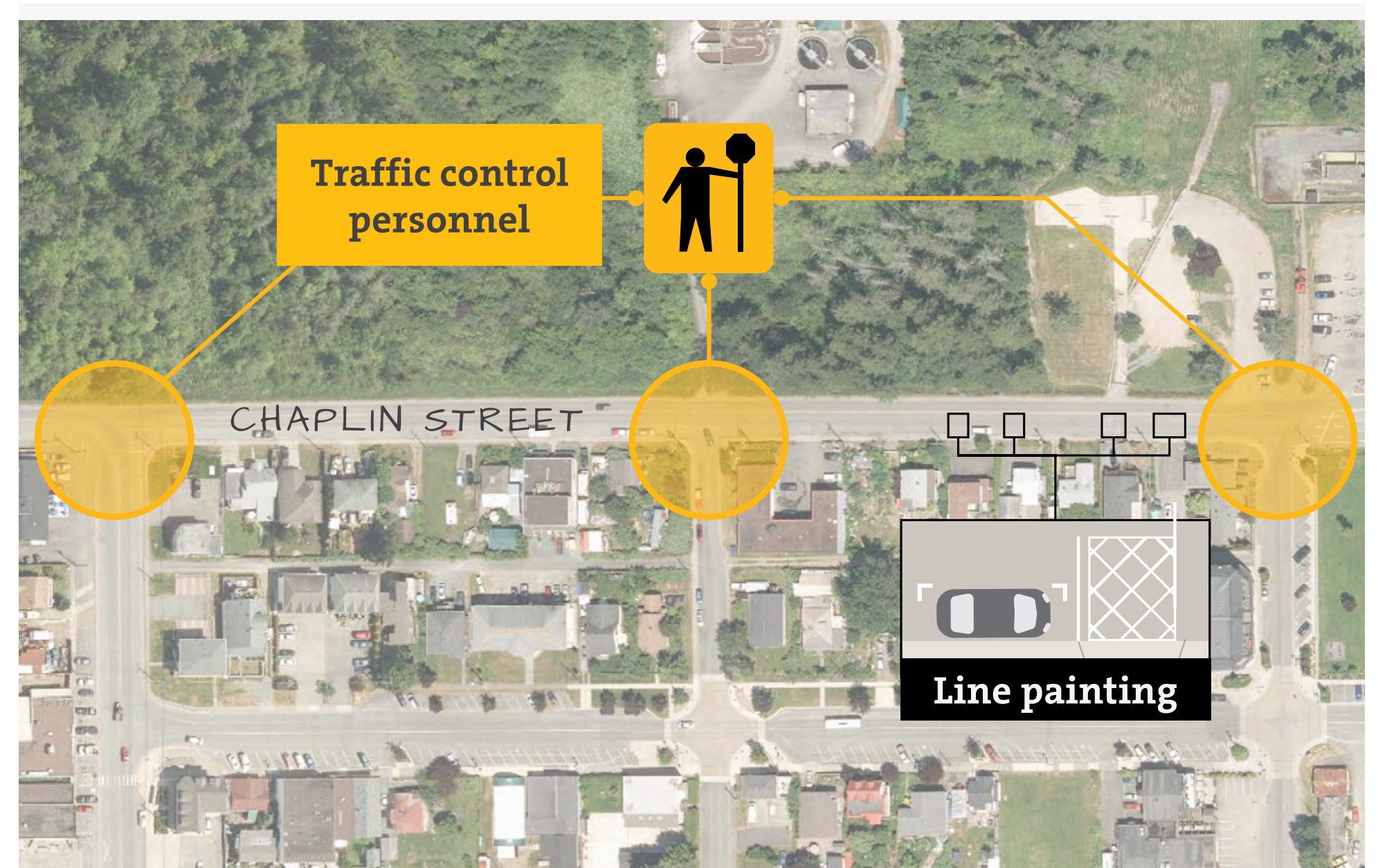


# 4. What about traffic management?

Ongoing efforts at reducing traffic congestion will be prioritized by BC Ferries Terminal Operations personnel.

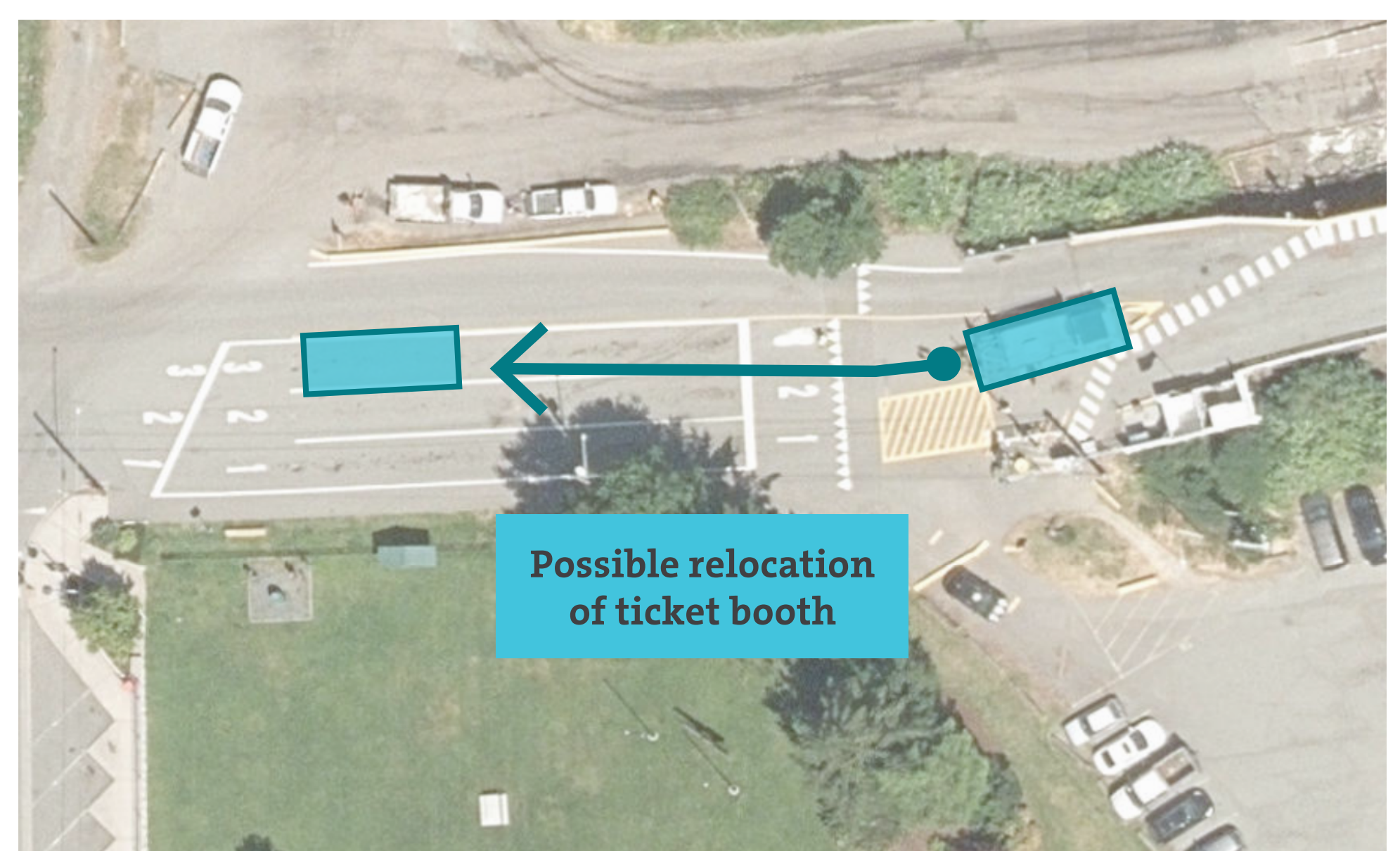
## What we do for traffic management TODAY

- We continue to deploy traffic control personnel and traffic control signage when possible during peak times to ensure the smooth flow of traffic.
- We direct pick-up and drop-off of vehicles to the appropriate location and ensure they do not overstay.
- We undertake line painting for driveways to ensure they are kept clear for residents along Chaplin Street.



## What we plan for traffic management in the FUTURE

- We are working with a Traffic Engineer to develop a concept for relocating the existing ticket booth that can increase the ticketed vehicles holding capacity.
- We are working with a Traffic Engineer on a traffic study to understand the benefits of implementing electronic message boards that would re-route boat launch traffic.



## What are the BENEFITS of two-ship service on ferry traffic in Crofton?

- Two-ship service on the Crofton-Vesuvius route will mean more trips and reduced wait times for vehicles and passengers.
- Overall, we anticipate less traffic is in the holding area, and any traffic that does remain will clear more quickly, reducing impacts on Chaplin Street.





## 5. Frequently asked questions

### Why has BCF made the decision not to redevelop the uplands now?

Capital Planning constraints resulted in deferral or adjustment of some of our previously planned projects allowing us to work within available funds.

We prioritized two main aspects of our capital investment plan:

- The work required to ensure the maintenance and continued reliability of our infrastructure
- The delivery of vessels to replace our aging fleet and meet the growing capacity demands of the communities we serve, and the replacement of berths required to support new vessel introductions

### When will the land-based scope take place?

The date for when the land-based terminal upgrades are deferred is currently unknown.

### Will the work be done during daytime hours or at night?

The work is expected to consist of both daytime and night time activities. All efforts will be made to minimize potential night time disturbances to residents.

### Is there any opportunity for public input and community consultation for this work?

We are happy to answer questions and address concerns, however, we are not looking for community input on the berth work, as it is necessary to maintain the infrastructure and prepare the route for the introduction of the new dual-service Island Class vessels in 2027.

### When will the construction commence?

The construction schedule will be detailed in the next stages of the project.



## 6. Frequently asked questions

Who may I contact if I have additional questions about this upcoming project?

Please reach out to the project team at:  
[www.bcferreriesprojects.ca/crofton-terminal-projects](http://www.bcferreriesprojects.ca/crofton-terminal-projects)

When will the community see the plans for the new berth infrastructure?

We will share the design with the community during the upcoming design development process.


To learn more, please visit the Crofton terminal project website or scan the QR code:

[www.bcferreriesprojects.ca/crofton-terminal-projects](http://www.bcferreriesprojects.ca/crofton-terminal-projects)






# 7. What are your thoughts on the Crofton terminal development?

  
SUGGEST IT

Write your ideas on a sticky note and add them in the space below. Feel free to add a check mark or sticky dot to show support for ideas already present.

  
SUPPORT IT